

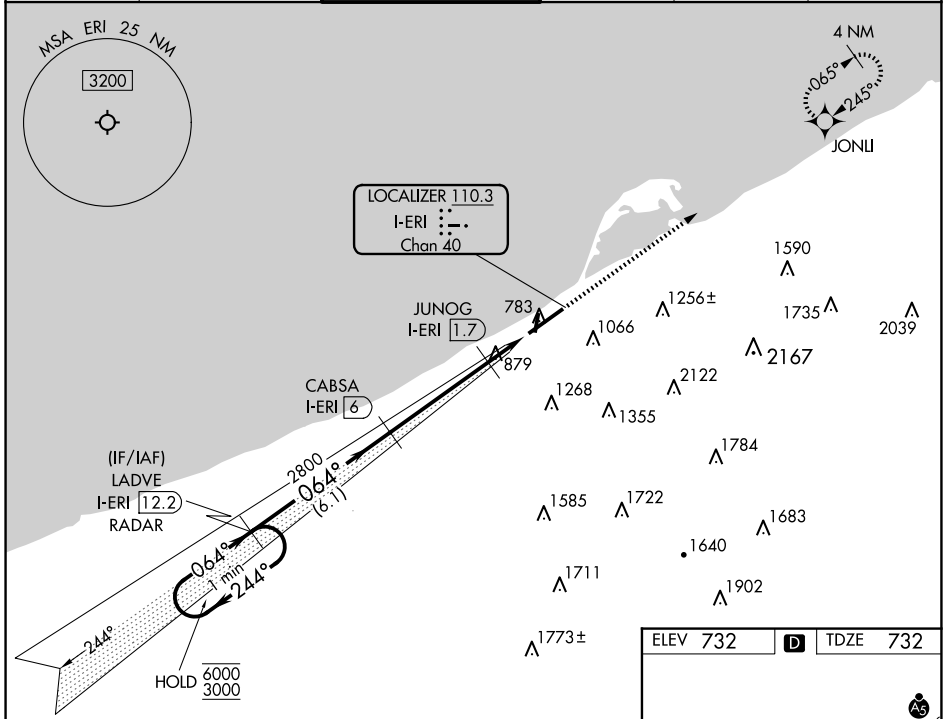
LOC/DME I-ERI <b>110.3</b> Chan <b>40</b>	APP CRS <b>064°</b>	Rwy ldg <b>7501</b> TDZE <b>732</b> Apt Elev <b>732</b>
---	------------------------	---

# ILS or LOC RWY 6

ERIE INTL/TOM RIDGE FLD (ERI)

DME required. RADAR required for procedure entry. RNP APCH - GPS.		MALSR	MISSED APPROACH: Climb to 3200 direct JONLU and hold.
<b>▼</b>	Circling to Rwy 2, 20 NA at night. Circling NA southeast of Rwy 6-24. Autopilot coupled approach NA below 1580. For inop ALS, increase S-LOC 6 Cats C and D visibility to RVR 6000.		

ATIS <b>120.35</b>	BUFFALO APP CON* <b>121.0 257.8</b>	ERIE TOWER* <b>118.1</b> (CTAF) <b>0 257.8</b>	GND CON <b>121.9</b>	CLNC DEL <b>126.8</b>	UNICOM <b>122.95</b>
-----------------------	--	---	-------------------------	--------------------------	-------------------------



NE-4, 20 FEB 2025 to 20 MAR 2025

NE-4, 20 FEB 2025 to 20 MAR 2025

