

WAAS CH 50208 W03A	APP CRS 027°	Rwy ldg 5500 TDZE 1269 Apt Elev 1276
----------------------------------------	------------------------	-----------------------------------------------------------------

RNAV (GPS) RWY 3

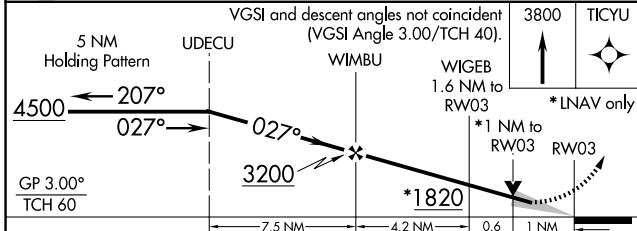
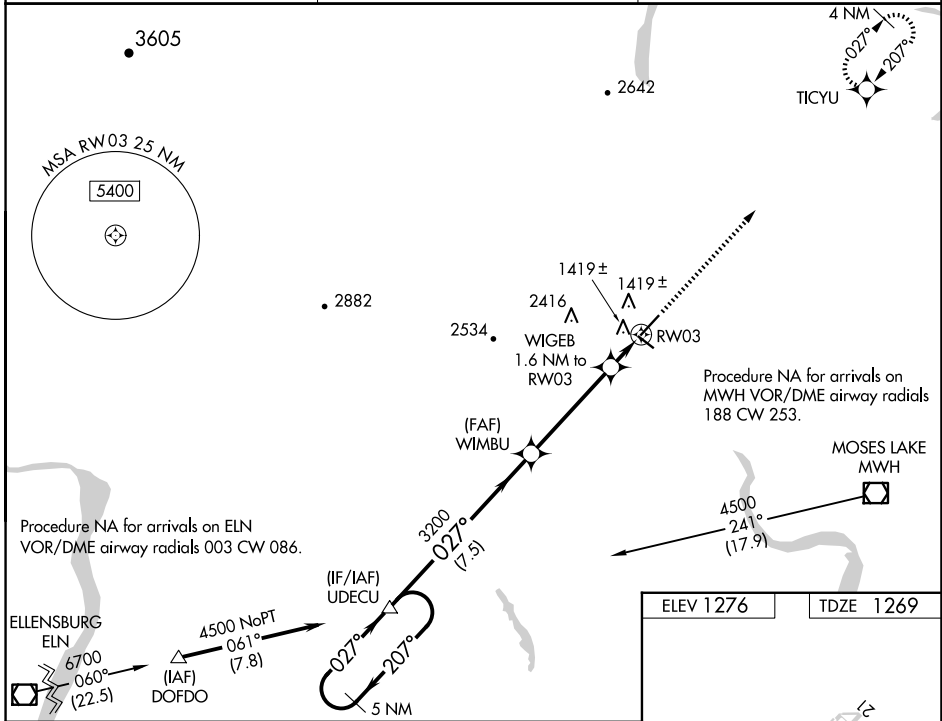
EPHRATA MUNI (EPH)

RNP APCH.

⚠ For uncompensated Baro-VNAV systems, LNAV/VNAV NA below -17°C or above 46°C. VDP and Baro-VNAV NA when using Moses Lake/Grant County Intl altimeter setting. When local altimeter setting not received, use Moses Lake/Grant County Intl altimeter setting and increase all DA/MDA 40 feet and LNAV Cat C and D visibility 1/4 SM.

MISSED APPROACH: Climb to 3800 direct TICYU and hold.

ASOS 135.775	GRANT COUNTY APP CON * 126.4 379.95	UNICOM 122.8 (CTAF) 0
------------------------	-----------------------------------------------	---------------------------------



ELEV 1276	TDZE 1269
-----------	-----------

RWY 4-22 for gliders only

1334

3427 X 190

5500 X 75

3843 X 60

1296

027° to RW03

REIL Rwy 3, 11, 21 and 29 **0**

MIRL Rwy 11-29 and 3-21 **0**

CATEGORY	A	B	C	D
LPV DA		1519-1	250 (300-1)	
LNAV/VNAV DA		1689-1½	420 (500-1½)	
LNAV MDA	1680-1	411 (500-1)	1680-1¼	411 (500-1¼)

NW-1, 20 FEB 2025 to 20 MAR 2025

NW-1, 20 FEB 2025 to 20 MAR 2025