

WAAS CH 82529 W03A	APP CRS 026°	Rwy Idg TDZE 1503 Apt Elev 1503
---------------------------------	------------------------	---

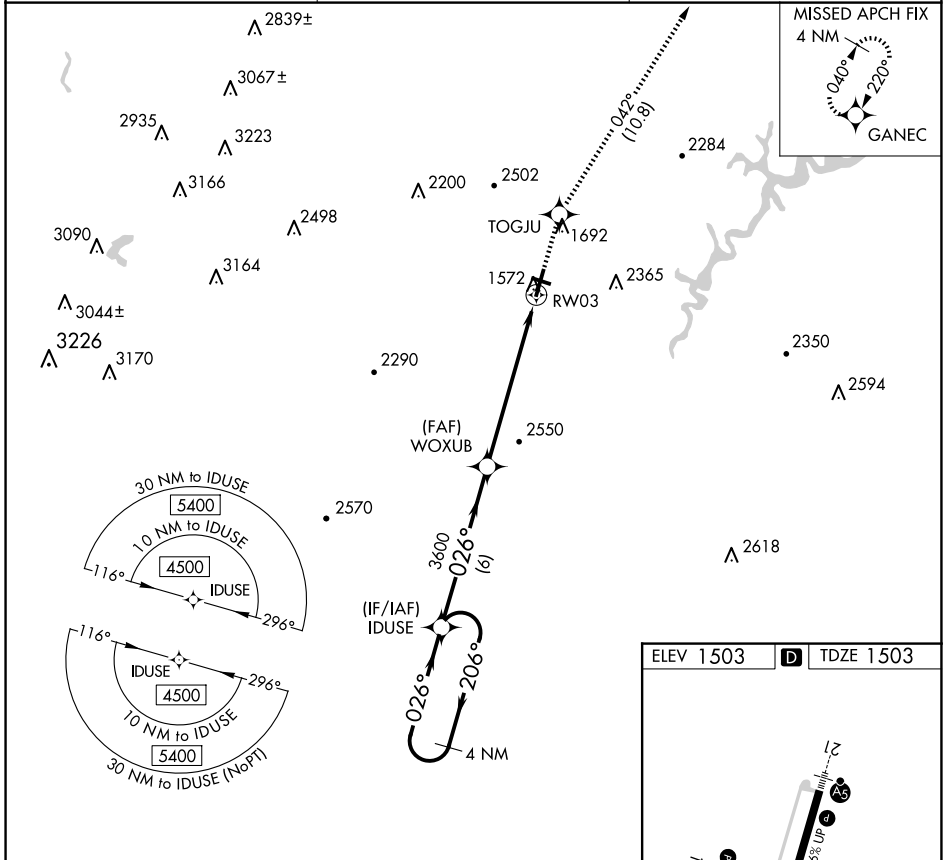
RNAV (GPS) Z RWY 3

ALTOONA/BLAIR COUNTY (A00)

▼ Rwy 3 helicopter visibility reduction below 3/4 SM NA. DME/DME RNP-0.3 NA. When local altimeter setting not received, use Bedford County altimeter setting and increase all DA 84 feet, and increase all visibilities 3/8 mile.

MISSED APPROACH: Climb to 5000 direct TOGJU and on track 042° to GANEC and hold, continue climb-in-hold to 5000.

ASOS 127.125	JOHNSTOWN APP CON ★ 121.2 299.2	CTAF 123.60
------------------------	---	-----------------------



NE-4, 20 FEB 2025 to 20 MAR 2025

NE-4, 20 FEB 2025 to 20 MAR 2025

VGSI and RNAV glidepath not coincident (VGSI Angle 3.00/TCH 43).		5000	TOGJU	tr 042°	GANEC
4 NM Holding Pattern	IDUSE				
4500 ← 206°	→ 026°				
GP 3.00°		WOXUB 3600		RW03	
TCH 55					
		6 NM		6.4 NM	
CATEGORY	A	B	C	D	
LPV DA		1828-1	325 (400-1)		

