

WAAS CH <b>58318</b> <b>W27A</b>	APP CRS <b>272°</b>	Rwy Idg TDZE <b>494</b> Apt Elev <b>494</b>
--	------------------------	---

# RNAV (GPS) RWY 27

LOUISA COUNTY/FREEMAN FLD (LKU)

RNP APCH

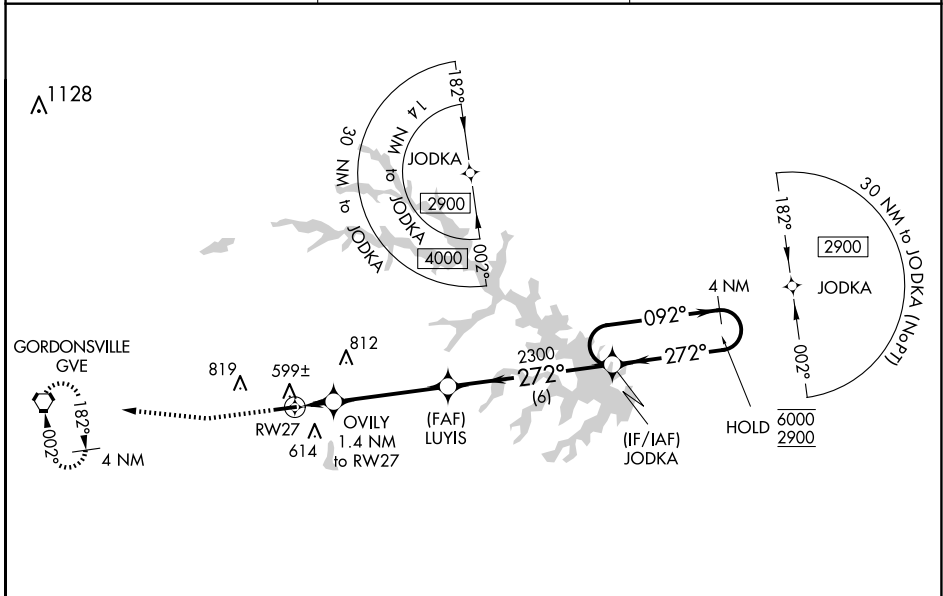
**⚠** Circling NA north of Rwy 9-27. Baro-VNAV NA when using Orange altimeter setting. For uncompensated Baro-VNAV systems, LNAV/VNAV NA below -15°C or above 54°C. When local altimeter setting not received, use Orange altimeter setting and increase all DA to 780 feet and all MDA 40 feet and increase LPV and LNAV/VNAV visibility  $\frac{1}{8}$  SM.

**MISSED APPROACH:** Climb to 1000 then climbing right turn to 2900 direct GVE VORTAC and hold, continue climb-in-hold to 2900.

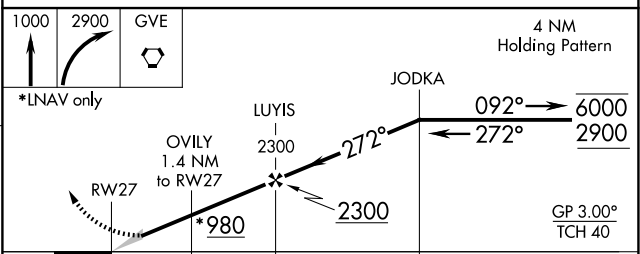
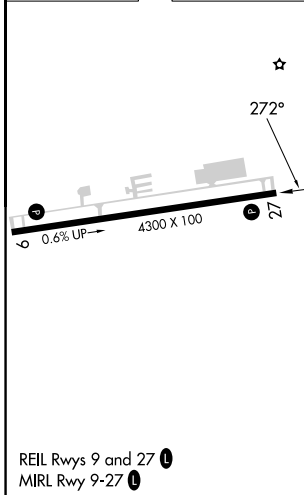
AWOS-3  
**119.475**

POTOMAC APP CON  
**132.85 323.125**

UNICOM  
**122.975 (CTAF) 0**



ELEV <b>494</b>	TDZE <b>494</b>
-----------------	-----------------



CATEGORY	A	B	C	D
LPV DA	744- $\frac{3}{4}$	250 (300- $\frac{3}{4}$ )		NA
LNAV/VNAV DA	744- $\frac{3}{4}$	250 (300- $\frac{3}{4}$ )		NA
LNAV MDA	860-1	366 (400-1)		NA
CIRCLING	900-1	960-1		
	406 (500-1)	466 (500-1)		NA

NE-3, 23 JAN 2025 to 20 FEB 2025

NE-3, 23 JAN 2025 to 20 FEB 2025