

LOC I-LKU <b>108.55</b>	APP CRS <b>272°</b>	Rwy Idg <b>4300</b>
		TDZE <b>494</b>
		Apt Elev <b>494</b>

# LOC RWY 27

LOUISA COUNTY/FREEMAN FLD (LKU)

DME required.

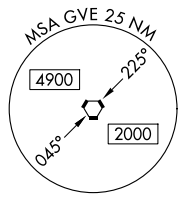
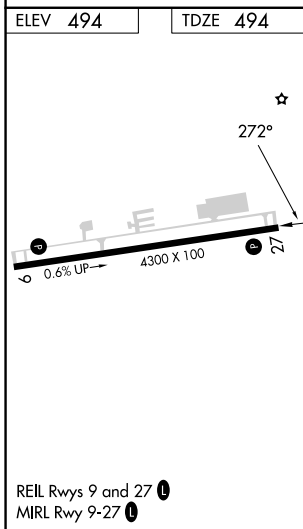
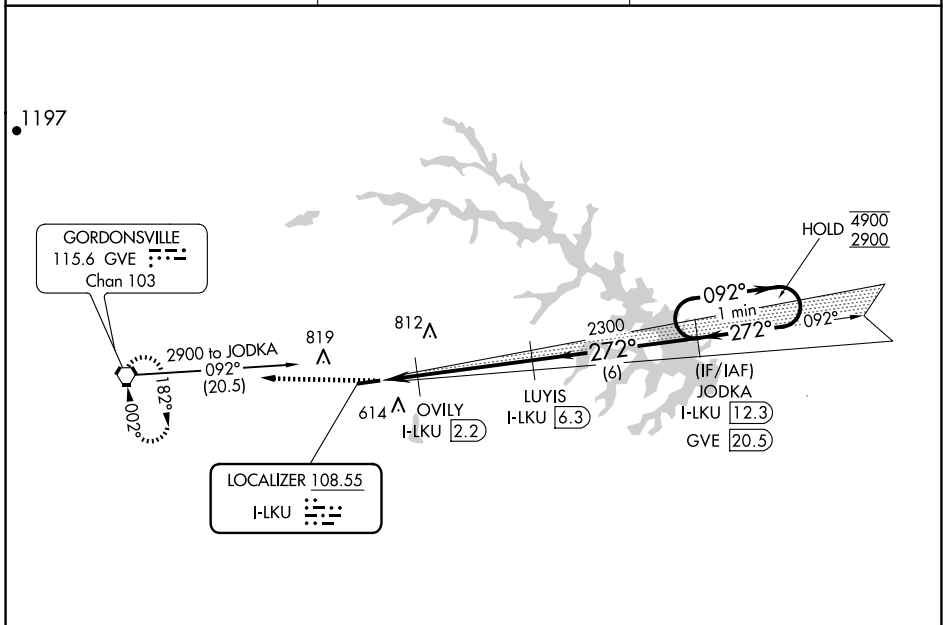
**▽** **△** NA Circling NA north of Rwy 9-27. When local altimeter setting not received, use Orange altimeter setting and increase all MDA 40 feet. VDP NA when using Orange altimeter setting.

**MISSED APPROACH:**  
Climb to 2900 direct  
GVE VORTAC and hold.

AWOS-3  
**119.475**

POTOMAC APP CON  
**132.85 323.125**

UNICOM  
**122.975 (CTAF) 0**



CATEGORY	A	B	C	D
S-LOC 27	820-1	326 (400-1)		NA
CIRCLING	900-1 406 (500-1)	960-1 466 (500-1)		NA

NE-3, 23 JAN 2025 to 20 FEB 2025

NE-3, 23 JAN 2025 to 20 FEB 2025