

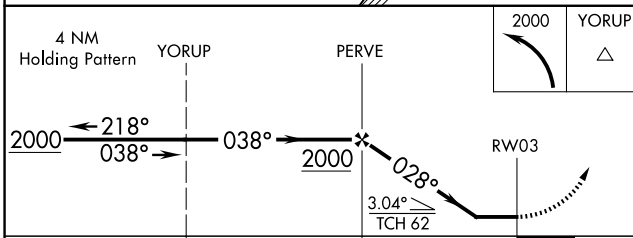
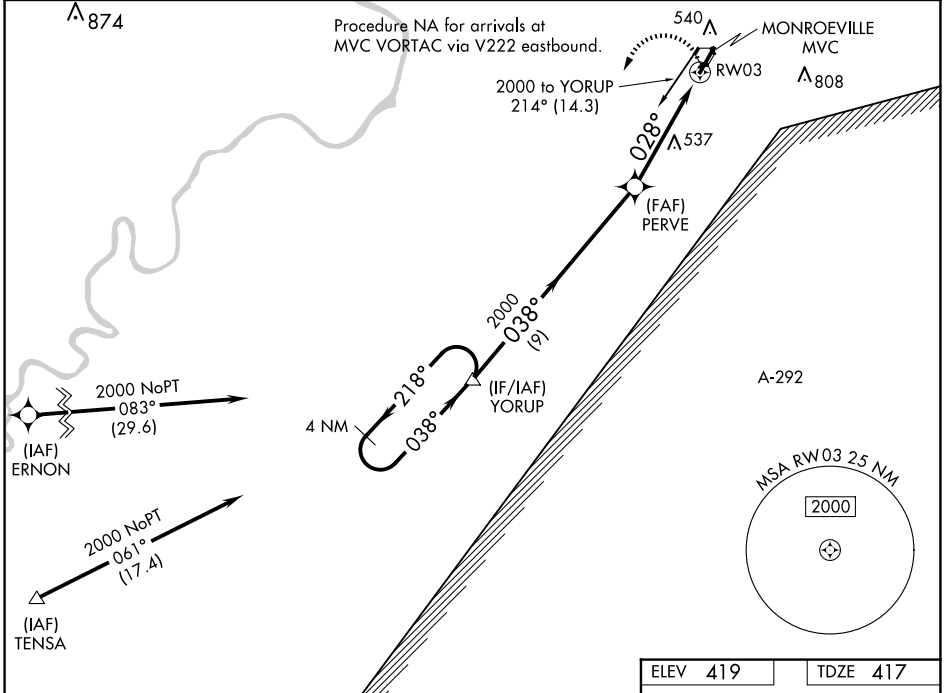
APP CRS	Rwy Idg	<b>6028</b>
<b>028°</b>	TDZE	<b>417</b>
	Apt Elev	<b>419</b>

# RNAV (GPS) RWY 3

MONROE COUNTY AEROPLEX (MVC)

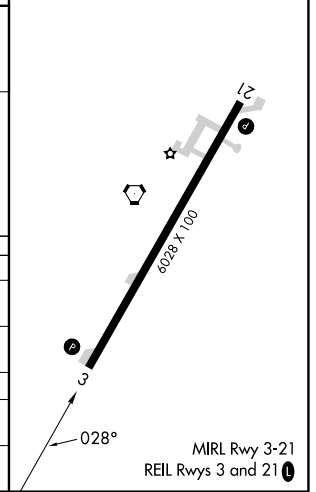
RNP APCH.	Obtain local altimeter setting on CTAF; when not received, use Evergreen Rgnl/Middleton Fld altimeter setting. Procedure NA at night. Rwy 3 helicopter visibility reduction below 1 SM NA.	MISSED APPROACH: Climbing left turn to 2000 direct YORUP and hold.
-----------	--	--

ATLANTA CENTER <b>118.55 267.9</b>	UNICOM <b>123.0 (CTAF)</b>
---------------------------------------	-------------------------------



ELEV 419	TDZE 417
----------	----------

CATEGORY	A	B	C	D
LNVA MDA	940-1 523 (600-1)		940-1½ 523 (600-1½)	
<b>C</b> CIRCLING	940-1 521 (600-1)		940-1½ 521 (600-1½)	1120 2¼ 701 (800-2¼)
EVERGREEN RGNL/MIDDLETON FLD ALTIMETER SETTING MINIMUMS				
LNVA MDA	1000-1 583 (600-1)		1000-1¾ 583 (600-1¾)	
<b>C</b> CIRCLING	1000-1 581 (600-1)		1000-1¾ 581 (600-1¾)	1180-2½ 761 (800-2½)



SE-4, 23 JAN 2025 to 20 FEB 2025

SE-4, 23 JAN 2025 to 20 FEB 2025