


|                           |                        |                             |   |
|---------------------------|------------------------|-----------------------------|---|
| LOC I-FRL<br><b>109.3</b> | APP CRS<br><b>339°</b> | Rwy Idg<br>TDZE<br>Apt Elev | <b>8500</b><br><b>329</b><br><b>346</b> |
|---------------------------|------------------------|-----------------------------|---|

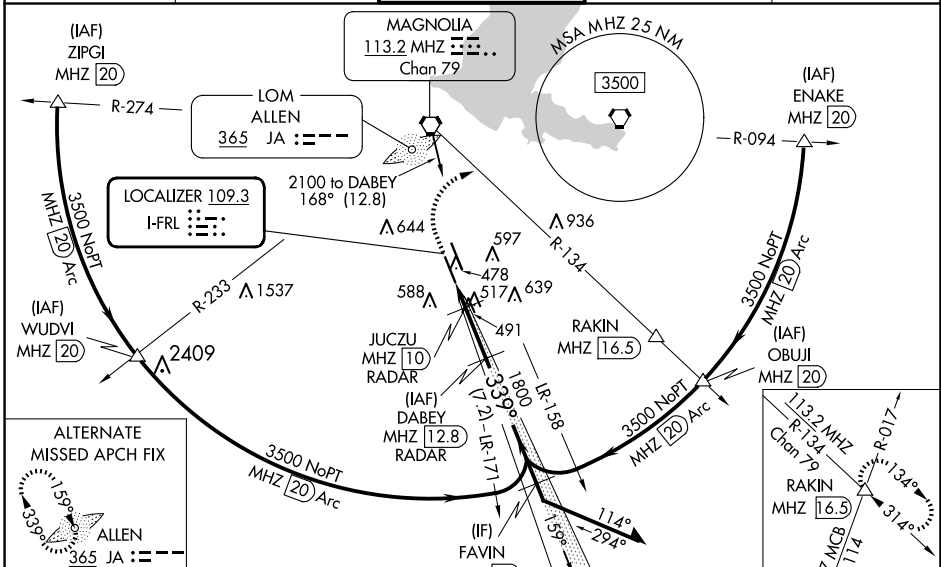
# ILS or LOC RWY 34L

JACKSON-MEDGAR WILEY EVERS INTL (JAN)

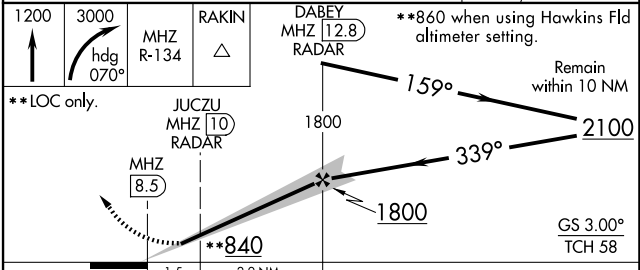
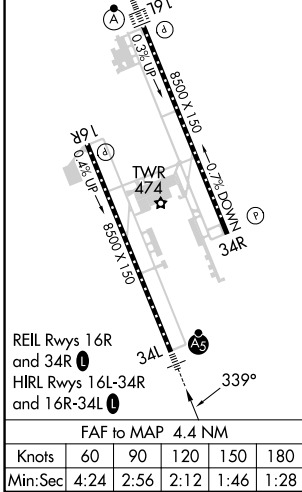
**⚠** Circling NA for Cat E southwest of Rwy 16R-34L. DME or RADAR required. When local altimeter setting not received, use Hawkins Fld altimeter setting and increase all DA 19 feet and all MDA 20 feet; increase S-ILS 34L visibility to RVR 4000. For inop ALS, increase S-ILS 34L Cat E visibility to RVR 4000 and S-LOC 34L all Cats visibility to 1½ SM. For inop ALS when using Hawkins Fld altimeter setting, increase S-LOC 34L Cat E visibility to 1½ SM. Inop table does not apply to S-ILS 34L when using Hawkins Fld altimeter setting. Rwy 34L helicopter visibility reduction below RVR 4000 NA. Procedure turn NA for Cat E. #DME from MHz VORTAC.

**MALS**  
 MISSED APPROACH: Climb to 1200 then climbing right turn to 3000 on heading 070° and MHz VORTAC R-134 to RAKIN INT/MHz 16.5 DME and hold.

|                       |  |   |                               |                         |
|-----------------------|--|---|-------------------------------|-------------------------|
| ATIS<br><b>121.05</b> | JACKSON APP CON*<br><b>123.9 317.7</b> | JACKSON TOWER*<br><b>120.9 (CTAF) 0 352.0</b> | GND CON<br><b>121.7 348.6</b> | UNICOM<br><b>122.95</b> |
|-----------------------|--|---|-------------------------------|-------------------------|



|          |          |
|----------|----------|
| ELEV 346 | TDZE 329 |
|----------|----------|



| CATEGORY             | A                  | B           | C            | D           | E            |
|----------------------|--------------------|-------------|--------------|-------------|--------------|
| S-ILS 34L            | 529/18 200 (200-½) |             |              |             |              |
| S-LOC 34L            | 840/40             | 511 (500-¾) | 840/55       |             | 511 (500-1)  |
| CIRCLING             | 880-1              | 900-1       | 900-1½       | 960-2       | 1040-2½      |
|                      | 534 (600-1)        | 554 (600-1) | 554 (600-1½) | 614 (700-2) | 694 (700-2½) |
| JUCZU DME MINIMUMS # |                    |             |              |             |              |
| S-LOC 34L            | 760/40 431 (500-¾) |             |              |             |              |
| CIRCLING             | 880-1              | 900-1       | 900-1½       | 960-2       | 1040-2½      |
|                      | 534 (600-1)        | 554 (600-1) | 554 (600-1½) | 614 (700-2) | 694 (700-2½) |

SC-4, 23 JAN 2025 to 20 FEB 2025

SC-4, 23 JAN 2025 to 20 FEB 2025