

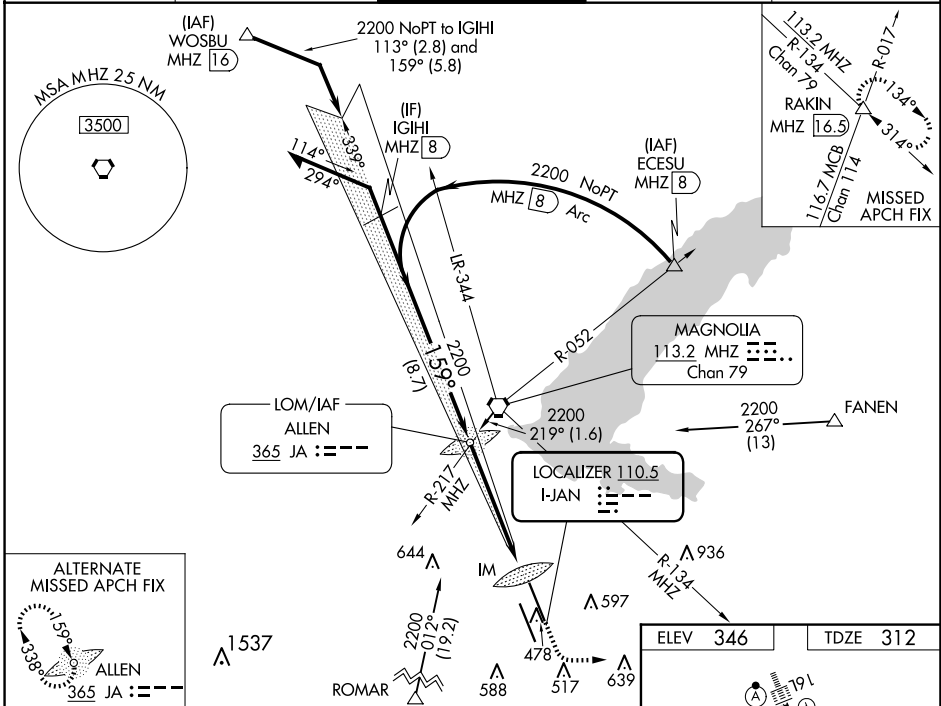
| | | |
|---------------------------|------------------------|------------------------|
| LOC I-JAN 110.5 | APP CRS 159° | Rwy Idg 8500 |
| | | TDZE 312 |
| | | Apt Elev 346 |

ILS RWY 16L (SA CAT I)

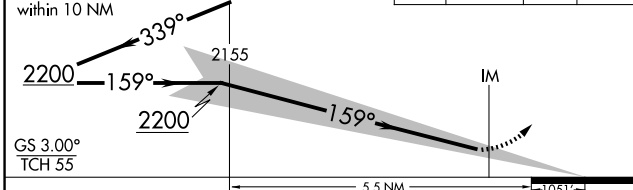
JACKSON-MEDGAR WILEY EVERS INTL (JAN)

| | | |
|--|---------|--|
| Requires specific OPSPEC, MSPEC, or LOA approval and use of HUD to DA. When control tower closed, procedure NA. When local altimeter setting not received, procedure NA. | ALSIF-2 | MISSED APPROACH: Climb to 800 then climbing left turn to 3000 on heading 090° and MHZ VORTAC R-134 to RAKIN INT/MHZ 16.5 DME and hold. |
|--|---------|--|

| | | | | |
|-----------------------|--|---|-------------------------------|-------------------------|
| ATIS 121.05 | JACKSON APP CON* 123.9 317.7 | JACKSON TOWER* 120.9 (CTAF) 352.0 | GND CON 121.7 348.6 | UNICOM 122.95 |
|-----------------------|--|---|-------------------------------|-------------------------|



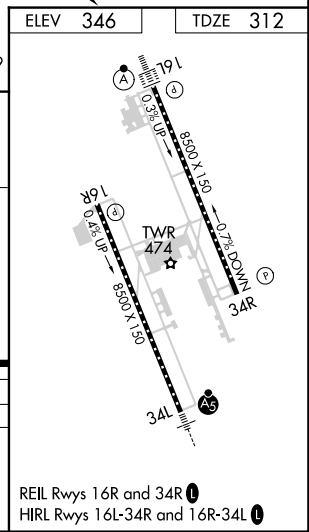
| | |
|----------|----------|
| ELEV 346 | TDZE 312 |
|----------|----------|



| | | | | |
|-----------|----------------------|---|---|---|
| CATEGORY | A | B | C | D |
| S-ILS 16L | RA 169/14 150 DA 462 | | | |

SA CATEGORY I ILS - SPECIAL AIRCREW & AIRCRAFT CERTIFICATION REQUIRED

REIL Rwy 16R and 34R
HIRL Rwy 16L-34R and 16R-34L



SC-4, 23 JAN 2025 to 20 FEB 2025

SC-4, 23 JAN 2025 to 20 FEB 2025