

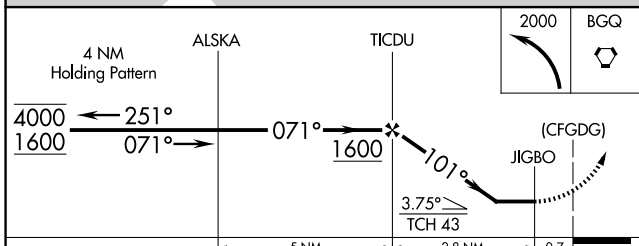
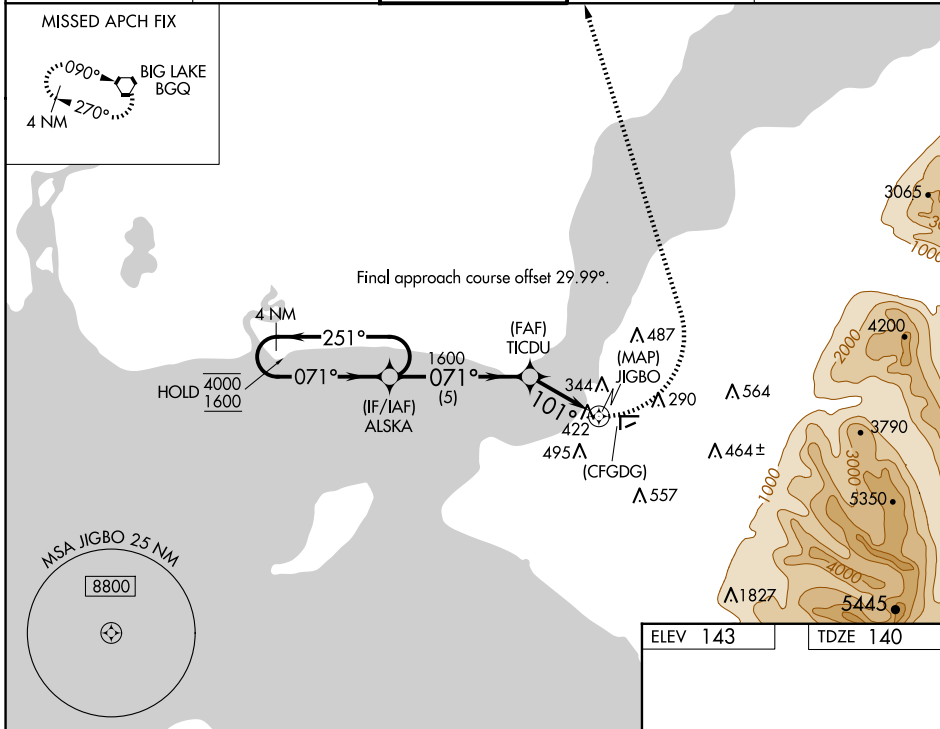
WAAS CH 51874 W07A	APP CRS 101°	Rwy Idg 4000 TDZE 140 Apr Elev 143
--	------------------------	---

RNAV (GPS) Z RWY 7

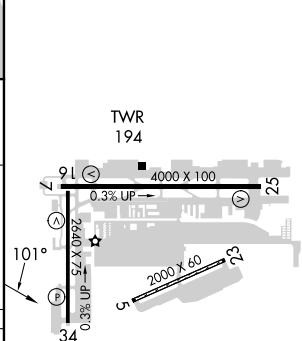
MERRILL FLD (MRI) (PAMR)

RNP APCH - GPS.		MISSED APPROACH: Climbing left turn to 2000 direct BQG VORTAC and hold.	
RADAR required for procedure entry.			
<p>⚠ When local altimeter setting not received, use Ted Stevens Anchorage Intl altimeter setting and increase all MDAs 20 feet. Circling Rwy 16, 34, 5 and 23 NA at night. Helicopter visibility reduction below 1 SM NA.</p>			

ATIS 124.25	ANCHORAGE APP CON 119.1 363.2	MERRILL TOWER * 126.0 (CTAF) 0	GND CON 121.7	UNICOM 122.95
-----------------------	---	--	-------------------------	-------------------------



ELEV 143	TDZE 140
----------	----------



CATEGORY	A	B	C	D
LP MDA	660-1	520 (600-1)		NA
LNAV MDA	680-1	540 (600-1)		NA
CIRCLING	740-1 597 (600-1)	800-1 657 (700-1)		NA

REIL Rwy 7, 16, 25, and 34 **0**
MIRL Rwy 7-25 and 16-34 **0**

AK, 26 DEC 2024 to 20 FEB 2025

AK, 26 DEC 2024 to 20 FEB 2025