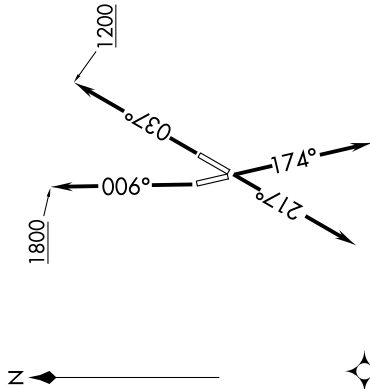


EC-1, 23 JAN 2025 to 20 FEB 2025

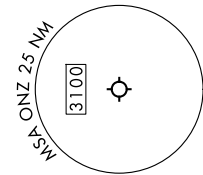
**TOP ALTITUDE:  
ASSIGNED BY ATC**

RNAV-1 DME/DME/IRU or GPS.  
RADAR required.

DETROIT DEP CON  
134.3 284.0  
AWOS-3  
119.675  
CTAF  
123.0



**TAKEOFF MINIMUMS:**  
Rwys 4, 17, 22: Standard.  
Rwy 35: Standard with minimum climb  
of 500' per NM to 1100.



**DEPARTURE ROUTE DESCRIPTION**

TAKEOFF RUNWAY 4: Climb on heading 037° to 1200 then as assigned by ATC, thence....

TAKEOFF RUNWAY 17: Climb on heading 174° or as assigned by ATC, thence....

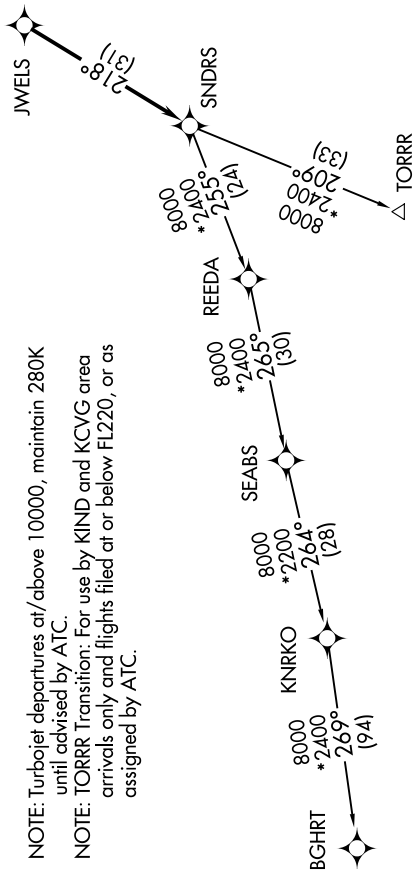
TAKEOFF RUNWAY 22: Climb on heading 217° or as assigned by ATC, thence....

TAKEOFF RUNWAY 35: Climb on heading 006° to 1800 then as assigned by ATC, thence....

....for RADAR vectors to JWELS, then on track 218° to SNDRS, then on (transition). Maintain ATC assigned altitude, expect filed altitude 10 minutes after departure.

BGHRT TRANSITION (SNDRS3.BGHRT):

TORRR TRANSITION (SNDRS3.TORRR):



**NOTE:** Turbojet departures at/above 10000, maintain 280K until advised by ATC.

**NOTE:** TORRR Transition: For use by KIND and KCVG area arrivals only and flights filed at or below FL220, or as assigned by ATC.

NOTE: Chart not to scale.

EC-1, 23 JAN 2025 to 20 FEB 2025