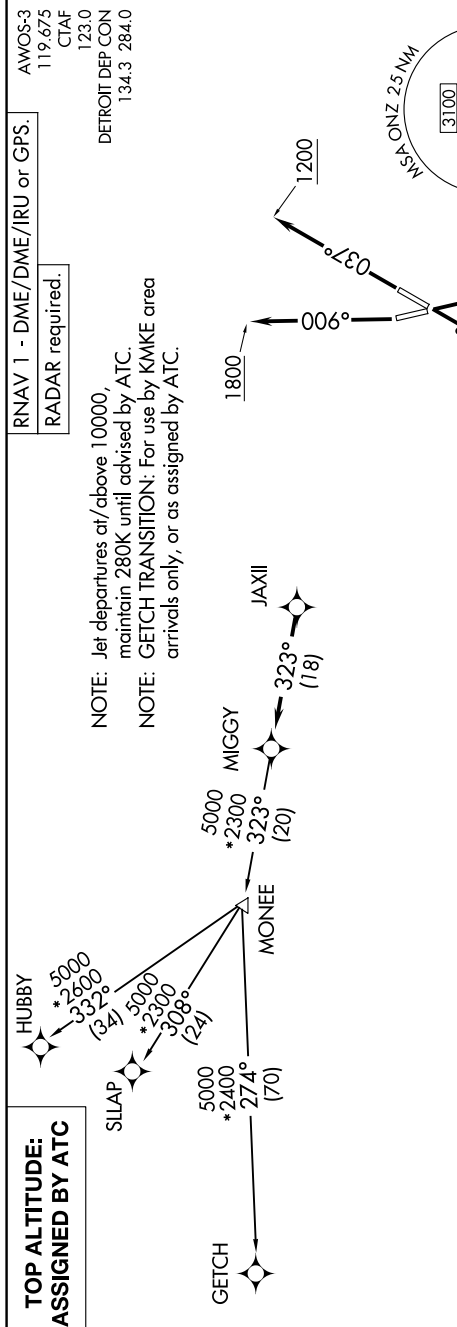


EC-1, 23 JAN 2025 to 20 FEB 2025



DEPARTURE ROUTE DESCRIPTION

TAKEOFF RUNWAY 4: Climb on heading 037° to 1200 then as assigned by ATC, thence...

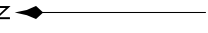
TAKEOFF RUNWAY 17: Climb on heading 174° or as assigned by ATC, thence...

TAKEOFF RUNWAY 22: Climb on heading 217° or as assigned by ATC, thence...

TAKEOFF RUNWAY 35: Climb on heading 006° to 1800 then as assigned by ATC, thence...

.... for RADAR vectors to JAXII, then on track 323° to MIGGY, then on (transition). Maintain 17000 or as assigned by ATC, expect filed altitude 10 minutes after departure.

GETCH TRANSITION (MIGGY3.GETCH):
HUBBY TRANSITION (MIGGY3.HUBBY):
SLLAP TRANSITION (MIGGY3.SLLAP):



TAKEOFF MINIMUMS:
Rwys 4, 17, 22: Standard.
Rwy 35: Standard with minimum climb of 500' per NM to 1100.

NOTE: Chart not to scale.

EC-1, 23 JAN 2025 to 20 FEB 2025