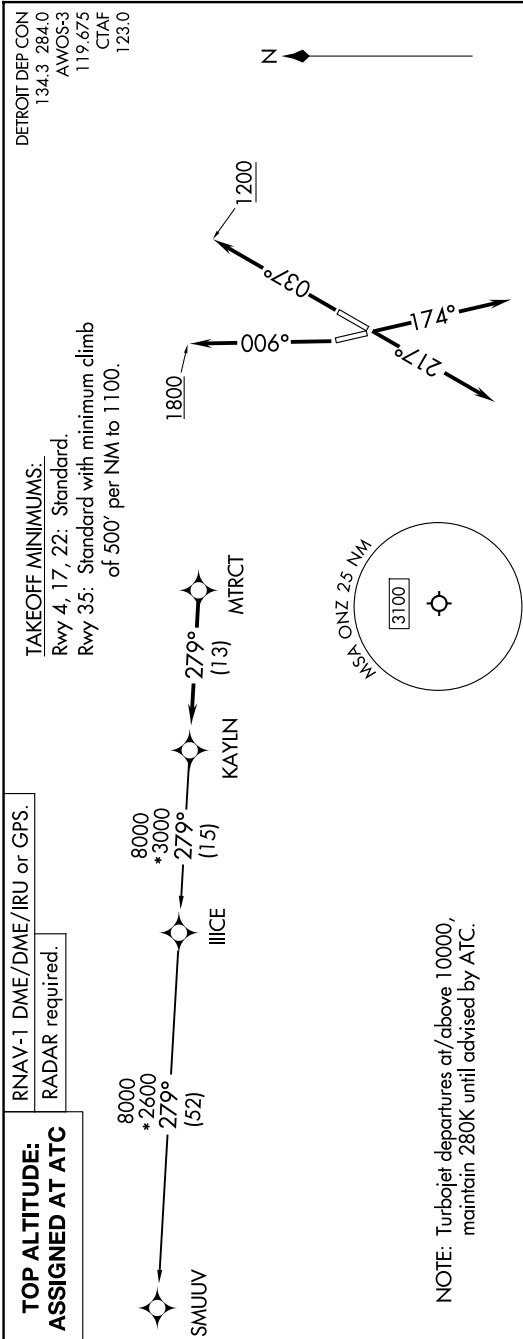


(KAYLN3.KAYLN) 24137

KAYLN THREE DEPARTURE (RNAV)

AL-940 (FAA)

GROSSE ILE MUNI (ONZ)
DETROIT/GROSSE ILE, MICHIGAN



**TOP ALTITUDE:
ASSIGNED AT ATC**

RNAV-1 DME/DME/IRU or GPS.
RADAR required.

TAKEOFF MINIMUMS:
Rwy 4, 17, 22: Standard.
Rwy 35: Standard with minimum climb of 500' per NM to 1100.

DETROIT DEP CON
134.3 284.0
AWOS-3
119.675
CTAF
123.0

NOTE: Turbojet departures at/above 10000, maintain 280K until advised by ATC.

NOTE: Chart not to scale.

DEPARTURE ROUTE DESCRIPTION

TAKEOFF RUNWAY 4: Climb on heading 037° to 1200 then as assigned by ATC, thence....
TAKEOFF RUNWAY 17: Climb on heading 174° or as assigned by ATC, thence....
TAKEOFF RUNWAY 22: Climb on heading 217° or as assigned by ATC, thence....
TAKEOFF RUNWAY 35: Climb on heading 006° to 1800 then as assigned by ATC, thence....

....for RADAR vectors to MTRCT, then on track 279° to KAYLN, then on (transition). Maintain ATC assigned altitude, expect filed altitude 10 minutes after departure.

SMUUV TRANSITION (KAYLN3.SMUUV):

KAYLN THREE DEPARTURE (RNAV)
(KAYLN3.KAYLN) 16MAY24

DETROIT/GROSSE ILE, MICHIGAN
GROSSE ILE MUNI (ONZ)