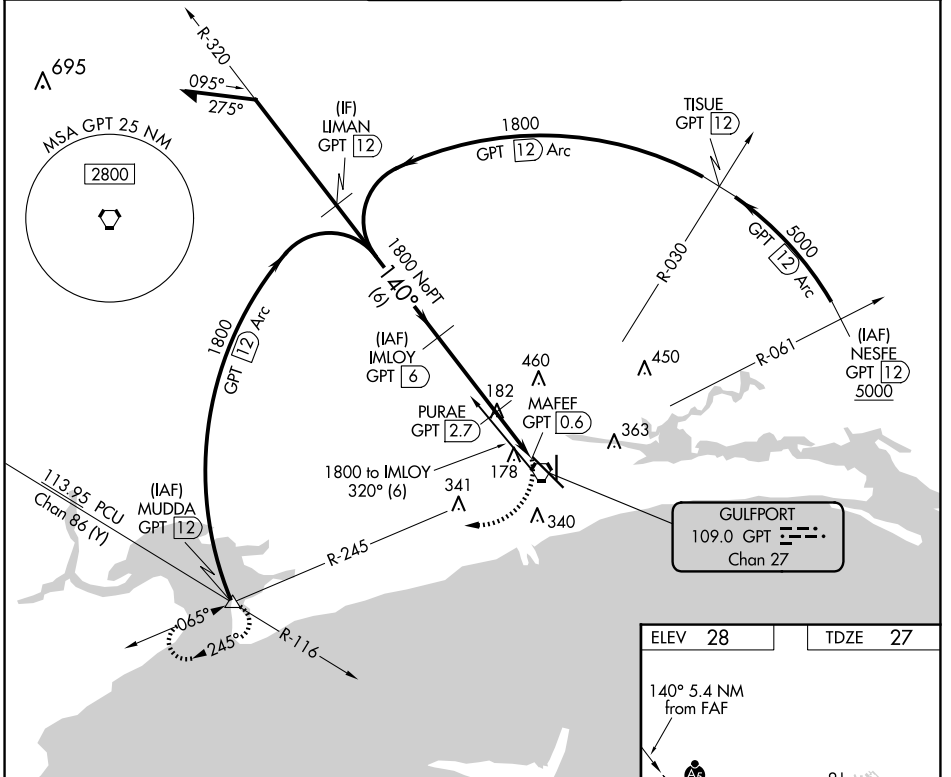


VORTAC GPT <b>109.0</b> Chan <b>27</b>	APP CRS <b>140°</b>	Rwy Idg TDZE <b>27</b> Apt Elev <b>28</b>	<b>9002</b>
--	------------------------	---	-------------

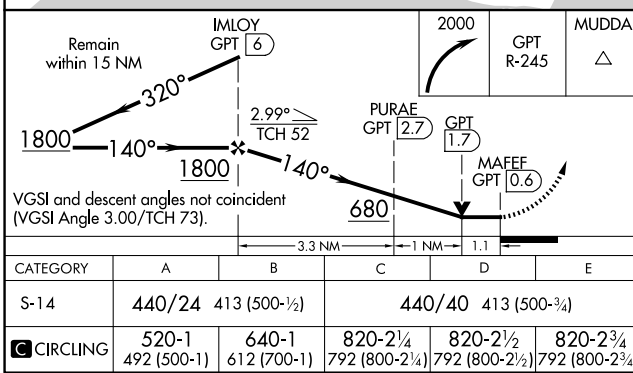
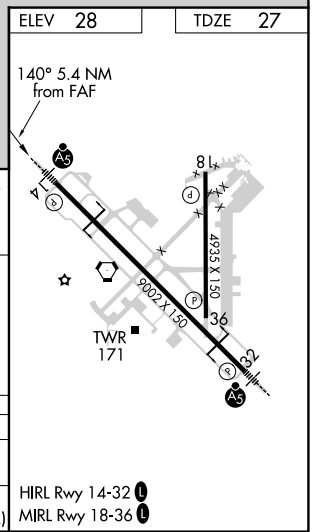
# VOR Z or TACAN Z RWY 14

GULFPORT-BILOXI INTL (GPT)

DME required.		MALSR	MISSED APPROACH: Climbing right turn to 2000 on GPT VORTAC R-245 to MUDDA INT/12 DME and hold.	
For inop ALS, increase S-14 Cat C/D/E visibility to RVR 6000. ASR				
ATIS <b>119.45</b>	GULFPORT APP CON * <b>127.5 254.25</b>	GULFPORT TOWER * <b>123.7 (CTAF) 0 339.8</b>	GND CON <b>120.4 348.6</b>	UNICOM <b>122.95</b>



GULFPORT  
109.0 GPT  
Chan 27



SC-4, 23 JAN 2025 to 20 FEB 2025

SC-4, 23 JAN 2025 to 20 FEB 2025