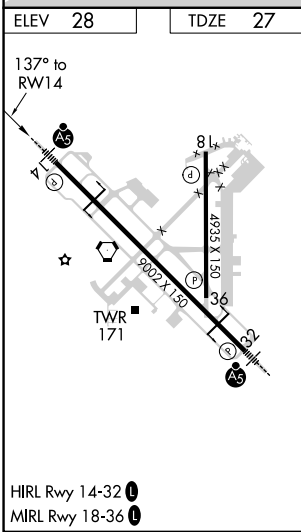
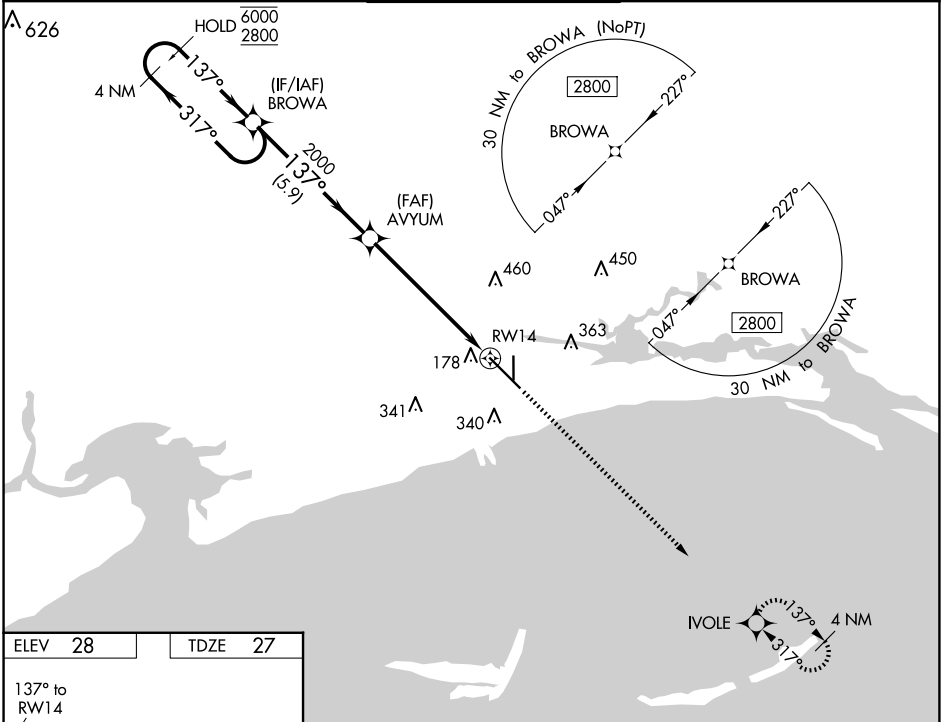


WAAS CH 97301 W14A	APP CRS 137°	Rwy Idg 9002 TDZE 27 Apt Elev 28
---------------------------------	------------------------	---

RNAV (GPS) RWY 14

GULFPORT-BILOXI INTL (GPT)

RNP APCH.		MALSRL	MISSED APPROACH: Climb to 2800 direct IVOLE and hold.	
<p>▼ For uncompensated Baro-VNAV systems, LNAV/VNAV NA below -3°C or above 54°C. For inop ALS, increase LNAV/VNAV all Cats visibility to RVR 5500. ▲ ASR **RVR 1800 authorized with use of FD or AP or HUD to DA.</p>				
ATIS 119.45	GULFPORT APP CON * 127.5 254.25	GULFPORT TOWER * 123.7 (CTAF) 339.8	GND CON 120.4 348.6	UNICOM 122.95



ELEV 28		TDZE 27	
<p>4 NM Holding Pattern</p> <p>BROWA</p> <p>6000 ← 317°</p> <p>2800 → 137°</p>		<p>VGSI and RNAV glidepath not coincident (VGSI Angle 3.00/TCH 73).</p> <p>2800</p> <p>IVOLE</p>	
<p>GP 3.00°</p> <p>TCH 50</p>		<p>AVYUM</p> <p>2000</p> <p>*1.5 NM to RWY 14</p> <p>RWY 14</p>	
<p>5.9 NM</p>		<p>4.6 NM</p> <p>1.5 NM</p>	
CATEGORY	A	B	C
LPV DA**	227/24 200 (200-½)		
LNAV/VNAV DA	404/35 377 (400-⅝)		
LNAV MDA	580/24	553 (600-½)	580/60 553 (600-1¼)
CIRCLING	580-1 552 (600-1)	640-1 612 (700-1)	820-2¼ 792 (800-2¼)
			820-2½ 792 (800-2½)

SC-4, 23 JAN 2025 to 20 FEB 2025

SC-4, 23 JAN 2025 to 20 FEB 2025