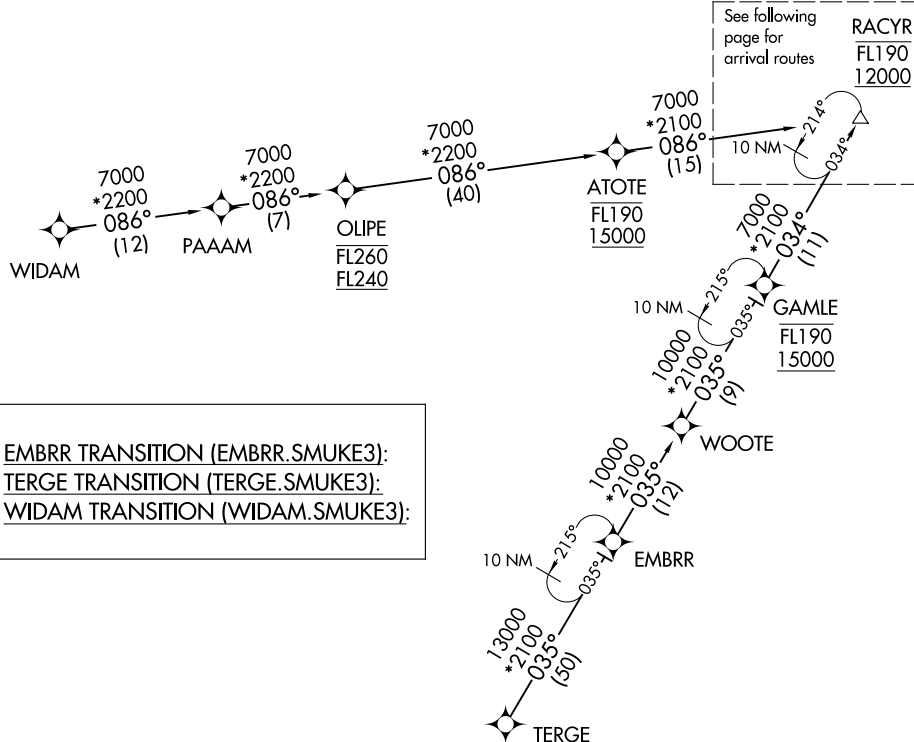


SMUKE THREE ARRIVAL (RNAV) Transition Routes

INDIANAPOLIS APP CON  
128.175 317.8  
D-ATIS  
134.25

RNAV 1 - DME/DME/IRU or GPS.  
RADAR required.



EMBRR TRANSITION (EMBRR.SMUKE3):  
TERGE TRANSITION (TERGE.SMUKE3):  
WIDAM TRANSITION (WIDAM.SMUKE3):

- NOTE: Expect descend via clearance and landing direction assignment by Indianapolis Center. Approach will assign landing rwy.
- NOTE: For non-GPS equipped aircraft landing rwy 23L; SHB DME must be operational.
- NOTE: For non-GPS equipped aircraft landing rwy 23R; SHB and VHP DMEs must be operational.
- NOTE: KIND Landing southwest select Rwy 23R transition. Expect runway assignment from Indianapolis APP CON prior to SMUKE.
- NOTE: KIND Landing northeast select Rwy 5L transition. Expect runway assignment from Indianapolis APP CON prior to SMUKE.

NOTE: Chart not to scale.

(CONTINUED ON FOLLOWING PAGE)

EC-2, 23 JAN 2025 to 20 FEB 2025

EC-2, 23 JAN 2025 to 20 FEB 2025