

| | | |
|--|------------------------|--|
| WAAS CH 45706 W05A | APP CRS 050° | Rwy Idg 11200 TDZE 747 Apt Elev 796 |
|--|------------------------|--|

RNAV (GPS) Y RWY 5L

INDIANAPOLIS INTL (IND)

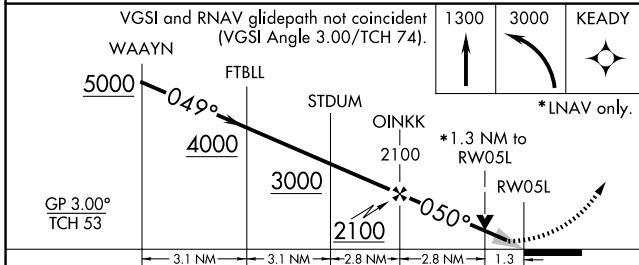
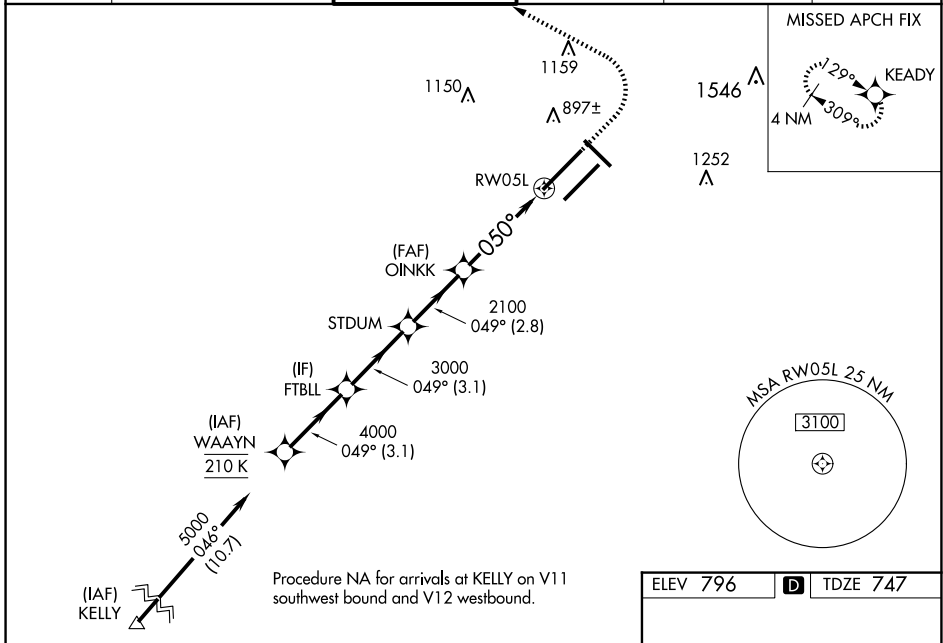
T
A

For uncompensated Baro-VNAV systems, LNAV/VNAV NA below -18°C (0°F) or above 54°C (130°F). DME/DME RNP-0.3 NA. Simultaneous approach authorized. LNAV procedure NA during simultaneous operations. Use of FD or AP providing RNAV track guidance required during simultaneous operations. For inoperative ALS, increase LNAV/VNAV all Cats visibility to 1¼ SM and increase LNAV Cat C/D visibility to 1½ SM.

ALS-F-2

MISSED APPROACH:
Climb to 1300 then climbing left turn to 3000 direct KEADY and hold.

| | | | | | |
|-------------------------|--|---|-------------------------|---------------------------------|-------|
| D-ATIS 134.25 | INDIANAPOLIS APP CON 128.175 317.8 | INDY TOWER 120.9 251.1 | GND CON 121.9 | CLNC DEL 128.75 251.1 | CPDLC |
|-------------------------|--|---|-------------------------|---------------------------------|-------|



| | | | | |
|-------------------|---------|-------------|------------------------|-------------------------|
| CATEGORY | A | B | C | D |
| LPV DA | 947/18 | | 200 (200-½) | |
| LNAV/VNAV DA | 1136/45 | | 389 (400-¾) | |
| LNAV MDA | 1220/24 | 473 (500-½) | 1220/50 | 473 (500-1) |
| C CIRCLING | 1420-1 | 624 (700-1) | 1420-1¾ 624 (700-¾) | 1560-2½ 764 (800-2½) |

ELEV 796 **D** TDZE 747

HIRL all Rwys
TDZ/CL Rwys 5L and 5R

EC-2, 23 JAN 2025 to 20 FEB 2025

EC-2, 23 JAN 2025 to 20 FEB 2025