

WAAS CH 77706 W23B	APP CRS 230°	Rwy Idg 11200 TDZE 783 Apt Elev 796
--	------------------------	--

RNAV (GPS) Y RWY 23R

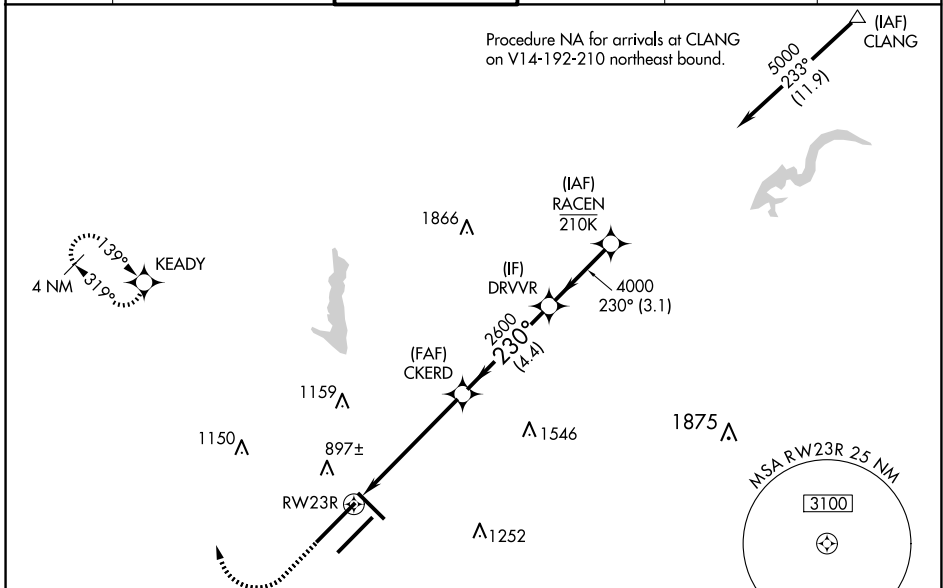
INDIANAPOLIS INTL (IND)

For uncompensated Baro-VNAV systems, LNAV/VNAV NA below -18°C (0°F) or above 54°C (130°F). DME/DME RNP-0.3 NA. For inoperative ALS, increase LNAV Cat C/D visibility to RVR 6000. Simultaneous approach authorized. LNAV procedure NA during simultaneous operations. Use of FD or AP providing RNAV track guidance required during simultaneous operations.
**** RVR 1800 authorized with use of FD or AP or HUD to DA.**

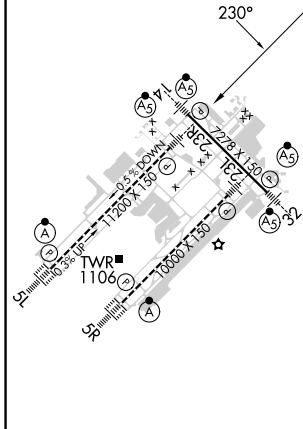


MISSED APPROACH:
Climb to 1500 then climbing right turn to 3000 direct KEADY and hold.

D-ATIS 134.25	INDIANAPOLIS APP CON 128.175 317.8	INDY TOWER 120.9 251.1	GND CON 121.9	CLNC DEL 128.75 251.1	CPDLC
-------------------------	--	----------------------------------	-------------------------	---------------------------------	-------



ELEV 796	D	TDZE 783
----------	----------	----------



1500	3000	KEADY	VGSI and RNAV glidepath not coincident (VGSI Angle 3.00/TCH 71).	
* LNAV only		CKERD	DRVVR	RACEN
* 1.1 NM to RWY23R		2600	4000	5000
RWY23R		2600	GP 3.00° TCH 55	
1.1 NM		4.4 NM	4.4 NM	3.1 NM
CATEGORY	A	B	C	D
LPV DA	** 983/24		200 (200-½)	
LNAV/VNAV DA	1165/40		382 (400-¾)	
LNAV MDA	1200/24	417 (500-½)	1200/40	417 (500-¾)
C CIRCLING	1420-1	624 (700-1)	1420-1¾ 624 (700-1¾)	1560-2½ 764 (800-2½)

HIRL all Rwys
TDZ/CL Rwys 5L and 5R

EC-2, 23 JAN 2025 to 20 FEB 2025

EC-2, 23 JAN 2025 to 20 FEB 2025