

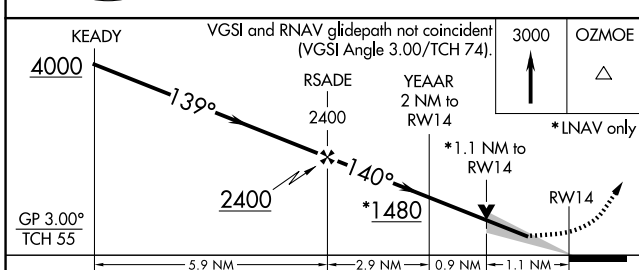
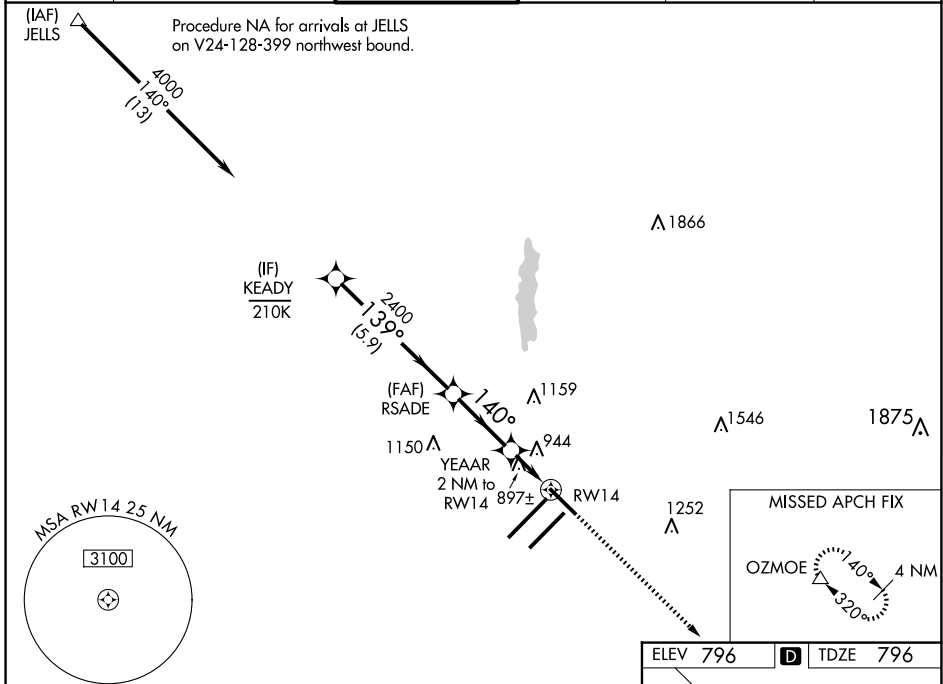
WAAS CH 42602 W14A	APP CRS 140°	Rwy Idg TDZE 7278 796 Apt Elev 796
--	------------------------	--

RNAV (GPS) Y RWY 14

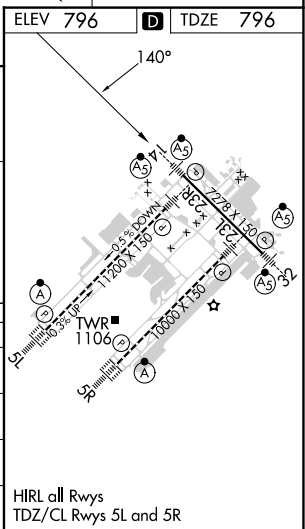
INDIANAPOLIS INTL (IND)

<p>⚠ For uncompensated Baro-VNAV systems, LNAV/VNAV NA below -18°C (0°F) or above 54°C (130°F). DME/DME RNP-0.3 NA. **RVR 1800 authorized with use of FD or AP or HUD to DA.</p>	<p>MALSR </p>	<p>MISSED APPROACH: Climb to 3000 direct OZMOE and hold.</p>
---	--------------------	---

D-ATIS 134.25	INDIANAPOLIS APP CON 128.175 317.8	INDY TOWER 120.9 251.1	GND CON 121.9	CLNC DEL 128.75 251.1	CPDLC
-------------------------	--	----------------------------------	-------------------------	---------------------------------	-------



CATEGORY	A	B	C	D
LPV DA	**996/24 200 (200-½)			
LNAV/VNAV DA	1092/24 296 (300-½)			
LNAV MDA	1200/24 404 (500-½)	1200/40 404 (500-¾)		
C CIRCLING	1420-1 624 (700-1)	1420-1¾ 624 (700-1¾)		1560-2½ 764 (800-2½)



EC-2, 23 JAN 2025 to 20 FEB 2025

EC-2, 23 JAN 2025 to 20 FEB 2025