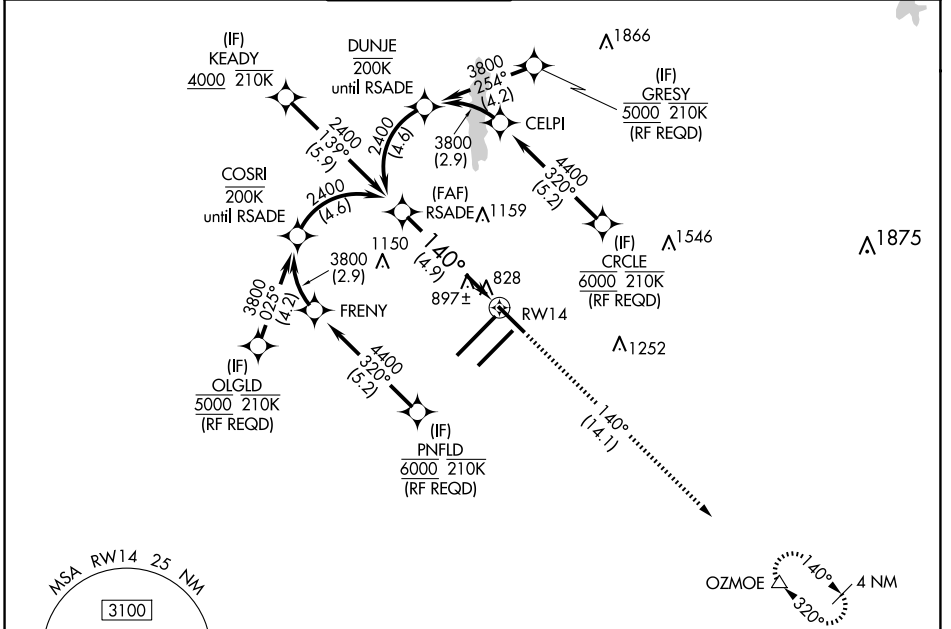


APP CRS	Rwy ldg	7278
140°	TDZE	796
	Apt Elev	796

RNAV (RNP) Z RWY 14

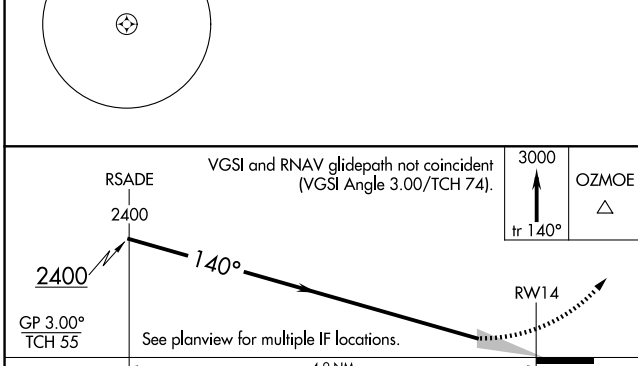
INDIANAPOLIS INTL (IND)

RNP AR APCH.			MALSR	MISSED APPROACH: Climb to 3000 on track 140° to OZMOE and hold.		
▼ For uncompensated Baro-VNAV systems, procedure NA below -18°C or above 54°C.						
D-ATIS	INDIANAPOLIS APP CON	INDY TOWER	GND CON	CLNC DEL	CPDLC	
134.25	128.175 317.8	120.9 251.1	121.9	128.75 251.1		



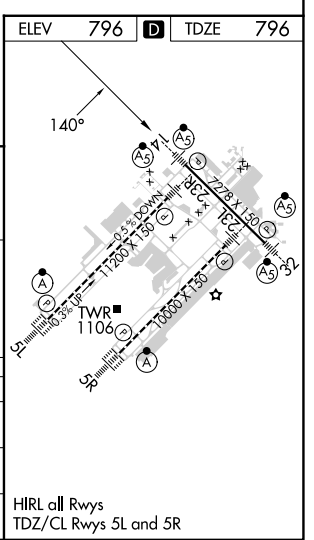
EC-2, 23 JAN 2025 to 20 FEB 2025

EC-2, 23 JAN 2025 to 20 FEB 2025



CATEGORY	A	B	C	D
RNP 0.14 DA		1135/26	339 (400-½)	
RNP 0.30 DA		1192/45	396 (400-¾)	

AUTHORIZATION REQUIRED



HIRL all Rwws
TDZ/CL Rwws 5L and 5R