

MEARZ SEVEN DEPARTURE

INDIANAPOLIS, INDIANA

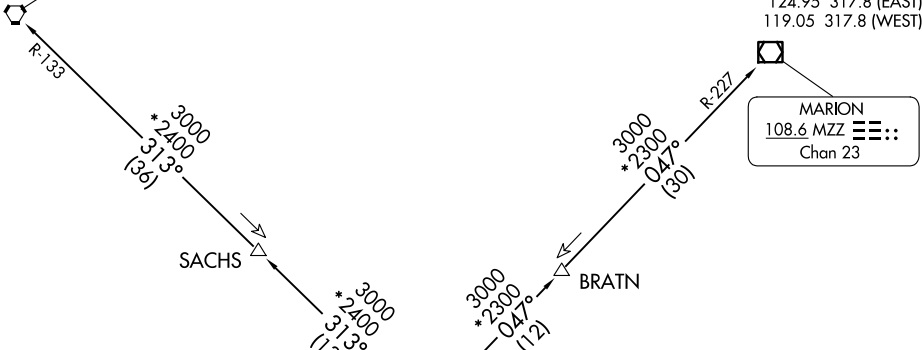
TOP ALTITUDE:
(JETS) 5000
(PROPS) 3000

RADAR required.

D-ATIS 134.25
 CLNC DEL 128.75 251.1
 CPDLC
 GND CON 121.9
 INDY TOWER 120.9 251.1
 INDIANAPOLIS DEP CON 124.95 317.8 (EAST)
 119.05 317.8 (WEST)

BOILER
 115.1 BVT
 Chan 98

MARION
 108.6 MZZ
 Chan 23



TAKEOFF MINIMUMS

Rwy 5L/R, 14, 23L/R, 32: Standard.

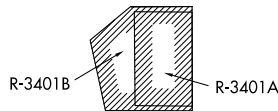
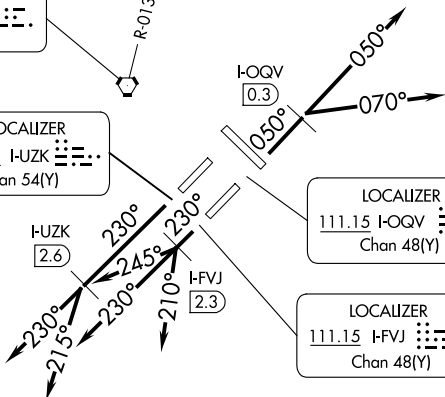
- NOTE: Turbojets accelerate to 250K until reaching 10000, if unable advise ATC.
- NOTE: Assigned to aircraft with a requested altitude of 11000 or above.
- NOTE: Select appropriate localizer/DME frequency/channel prior to departure.

BRICKYARD
 116.3 VHP
 Chan 110

LOCALIZER
 111.75 I-UZK
 Chan 54(Y)

LOCALIZER
 111.15 I-OQV
 Chan 48(Y)

LOCALIZER
 111.15 I-FVJ
 Chan 48(Y)



NOTE: Chart not to scale.

EC-2, 23 JAN 2025 to 20 FEB 2025

EC-2, 23 JAN 2025 to 20 FEB 2025

(NARRATIVE ON FOLLOWING PAGE)

MEARZ SEVEN DEPARTURE

(MEARZ7.MEARZ) 19MAY22

INDIANAPOLIS, INDIANA
INDIANAPOLIS INTL (IND)