

D-ATIS
134.25
CLNC DEL
128.75 251.1
CPDLC
GND CON
121.9
INDY TOWER
120.9 251.1
INDIANAPOLIS DEP CON
124.95 317.8 (EAST)
119.05 317.8 (WEST)

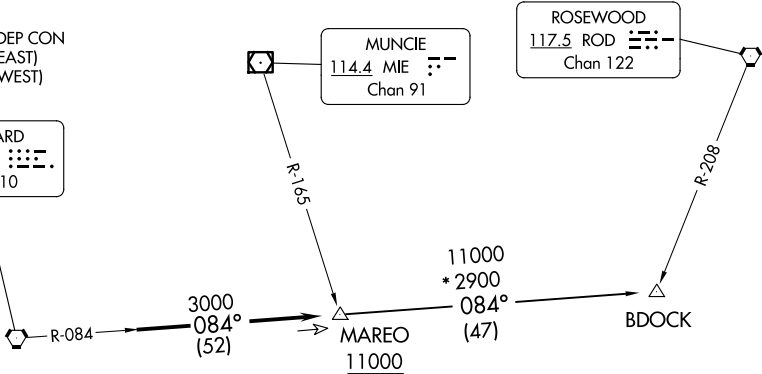
TAKEOFF MINIMUMS
Rwys 5L/R, 14, 23L/R, 32: Standard.

TOP ALTITUDE:
(JETS) 5000
(PROPS) 3000

BRICKYARD
116.3 VHP
Chan 110

MUNCIE
114.4 MIE
Chan 91

ROSEWOOD
117.5 ROD
Chan 122

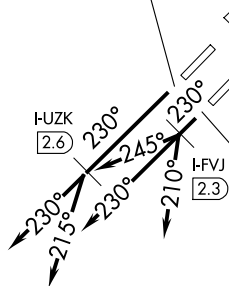


LOCALIZER
111.75 HUZK
Chan 54(Y)

I-OQV
0.3

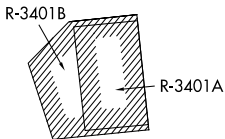


LOCALIZER
111.15 I-OQV
Chan 48(Y)



LOCALIZER
111.15 I-FVJ
Chan 48(Y)

- NOTE: RADAR required.
- NOTE: Select appropriate localizer/DME frequency/channel prior to departure.
- NOTE: Turbojets accelerate to 250K until reaching 10000, if unable advise ATC.
- NOTE: Assigned to aircraft with a requested altitude of 11000 or above.



(NARRATIVE ON FOLLOWING PAGE)

NOTE: Chart not to scale.

EC-2, 23 JAN 2025 to 20 FEB 2025

EC-2, 23 JAN 2025 to 20 FEB 2025