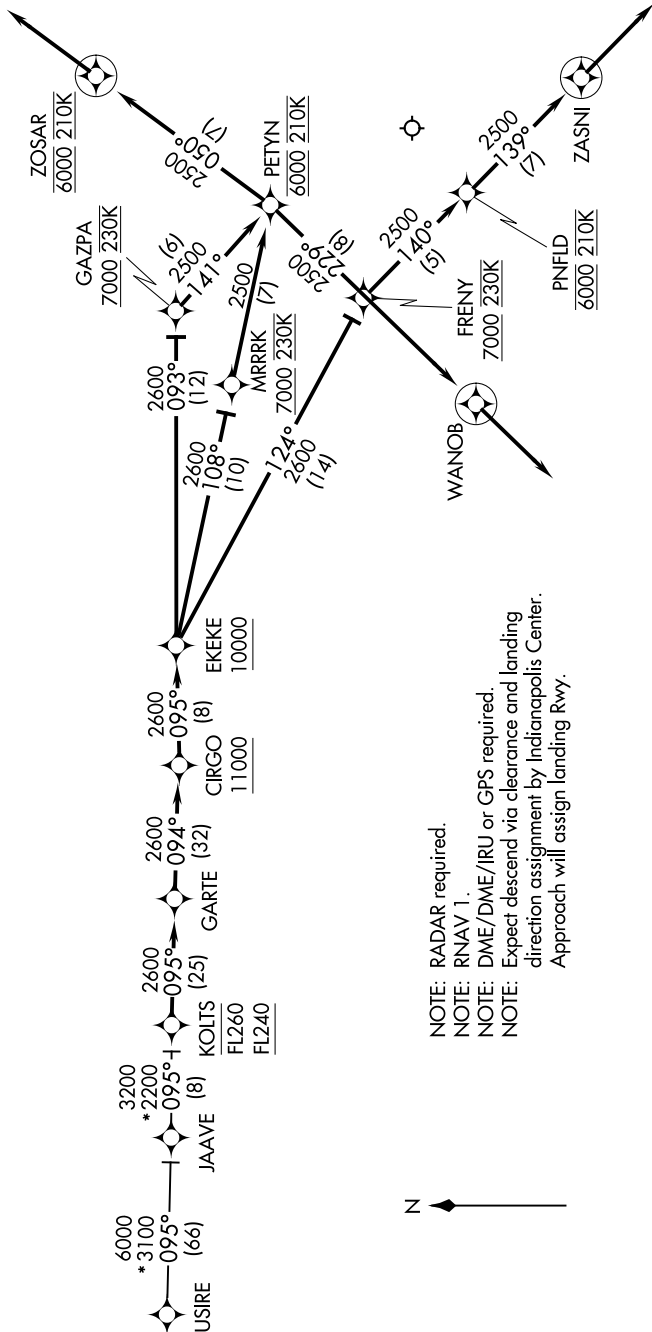


KOLTS TWO ARRIVAL (RNAV)

INDIANAPOLIS, INDIANA

EC-2, 23 JAN 2025 to 20 FEB 2025

INDIANAPOLIS APP CON
128.175 317.8
D-ATIS
134.25



- NOTE: RADAR required.
- NOTE: RNAV 1.
- NOTE: DME/DME/IRU or GPS required.
- NOTE: Expect descent via clearance and landing direction assignment by Indianapolis Center.
- NOTE: Approach will assign landing Rwy.

(NARRATIVE ON FOLLOWING PAGE)

NOTE: Chart not to scale.

EC-2, 23 JAN 2025 to 20 FEB 2025

KOLTS TWO ARRIVAL (RNAV)

INDIANAPOLIS, INDIANA

INDIANAPOLIS INTL (IND)