

INDY TWO DEPARTURE

AL-203 (FAA)

INDIANAPOLIS INTL (IND)
INDIANAPOLIS, INDIANA

D-ATIS 134.25
CLNC DEL
128.75 251.1
CPDLC
GND CON
121.9
INDY TOWER
120.9 251.1
INDIANAPOLIS DEP CON
124.95 317.8 (EAST)
119.05 317.8 (WEST)

RADAR required.

TOP ALTITUDE:
(JETS) 5000
(PROPS) 3000



BOILER
115.1 BVT
Chan 98

MARION
108.6 MZZ
Chan 23

ROSEWOOD
117.5 ROD
Chan 122



CHAMPAIGN
115.75 CMI
Chan 104(Y)

LOCALIZER
111.75 I-UZK
Chan 54(Y)

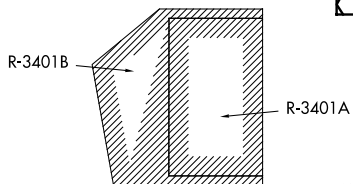
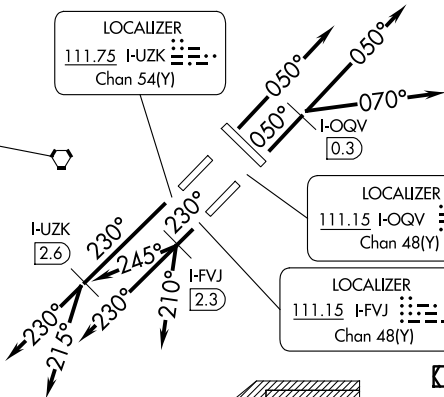
BRICKYARD
116.3 VHP
Chan 110

LOCALIZER
111.15 I-OQV
Chan 48(Y)

DAYTON
114.5 DGN
Chan 92

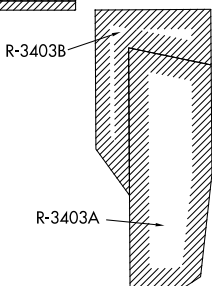
TERRE HAUTE
115.3 TTH
Chan 100

LOCALIZER
111.15 I-FVJ
Chan 48(Y)

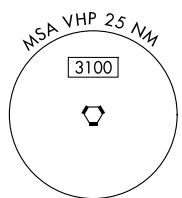


SHELBYVILLE
116.15 SHB
Chan 108 (Y)

HOOSIER
110.2 OOM
Chan 39



POCKET CITY
113.3 PXV
Chan 80



TAKEOFF MINIMUMS:

Rwy 5L/R, 14, 23L/R, 32: Standard.

NOTE: Select appropriate localizer/DME frequency/channel prior to departure.
NOTE: Jet aircraft accelerate to 250K until reaching 10000. If unable advise ATC.

(CONTINUED ON FOLLOWING PAGE)

NOTE: Chart not to scale.

EC-2, 23 JAN 2025 to 20 FEB 2025

EC-2, 23 JAN 2025 to 20 FEB 2025