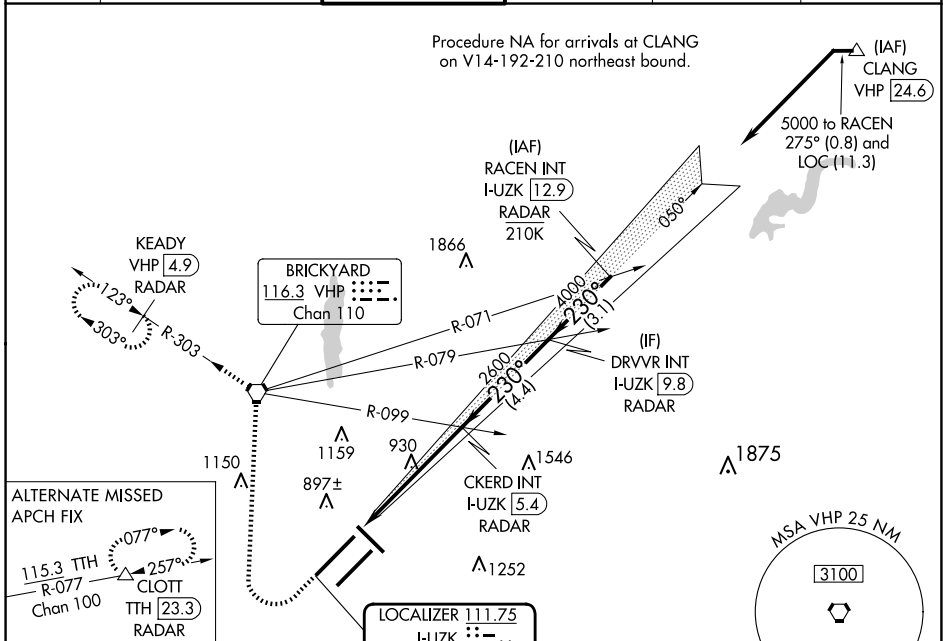


LOC/DME I-UZK <b>111.75</b> Chan 54 (Y)	APP CRS <b>230°</b>	Rwy Idg <b>11200</b> TDZE <b>783</b> Apt Elev <b>796</b>
---	------------------------	--

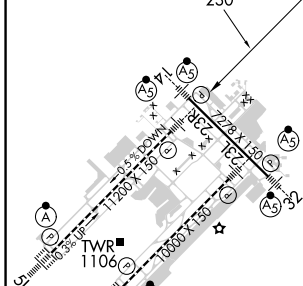
# ILS or LOC RWY 23R

INDIANAPOLIS INTL (IND)

<b>⚠</b> Simultaneous approach authorized. <b>⚠</b> DME or RADAR required. <b>**RVR 1800 authorized with use of FD or AP or HUD to DA.</b>	<b>MALS</b> 	<b>MISSED APPROACH:</b> Climb to 1500 then climbing right turn to 3000 direct VHP VORTAC and on VHP R-303 to KEADY/VHP 4.9 DME/RADAR and hold.			
	D-ATIS <b>134.25</b>	INDIANAPOLIS APP CON <b>128.175 317.8</b>	INDY TOWER <b>120.9 251.1</b>	GND CON <b>121.9</b>	CLNC DEL <b>128.75 251.1</b>

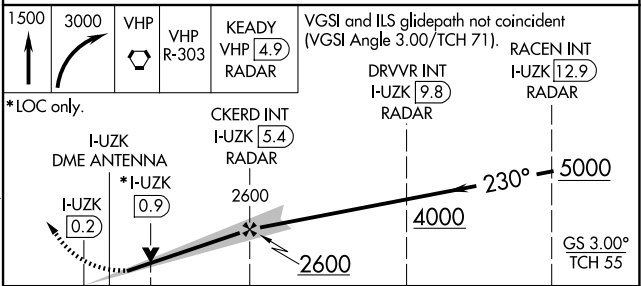


ELEV 796	<b>D</b>	TDZE 783
----------	----------	----------



HIRL all Rwys  
TDZ/CL Rwys 5L and 5R  
FAF to MAP 5.5 NM

Knots	60	90	120	150	180
Min:Sec	5:30	3:40	2:45	2:12	1:50



*LOC only. I-UZK DME ANTENNA I-UZK 0.2 *I-UZK 0.9 CKERD INT I-UZK 5.4 RADAR I-UZK 2600 I-UZK 4000 I-UZK 5000	VGSI and ILS glidepath not coincident (VGSI Angle 3.00/TCH 71). DRVVR INT I-UZK 9.8 RADAR RACEN INT I-UZK 12.9 RADAR			
CATEGORY	A	B	C	D
S-ILS 23R**	983/24 200 (200-½)			
S-LOC 23R	1180/24	397 (400-½)	1180/35	397 (400-¾)
<b>C</b> CIRCLING	1420-1	624 (700-1)	1420-1¾ 624 (700-1¾)	1560-2½ 764 (800-2½)

EC-2, 23 JAN 2025 to 20 FEB 2025

EC-2, 23 JAN 2025 to 20 FEB 2025