

OLYMPIA TWO ARRIVAL

AL-582 (FAA)

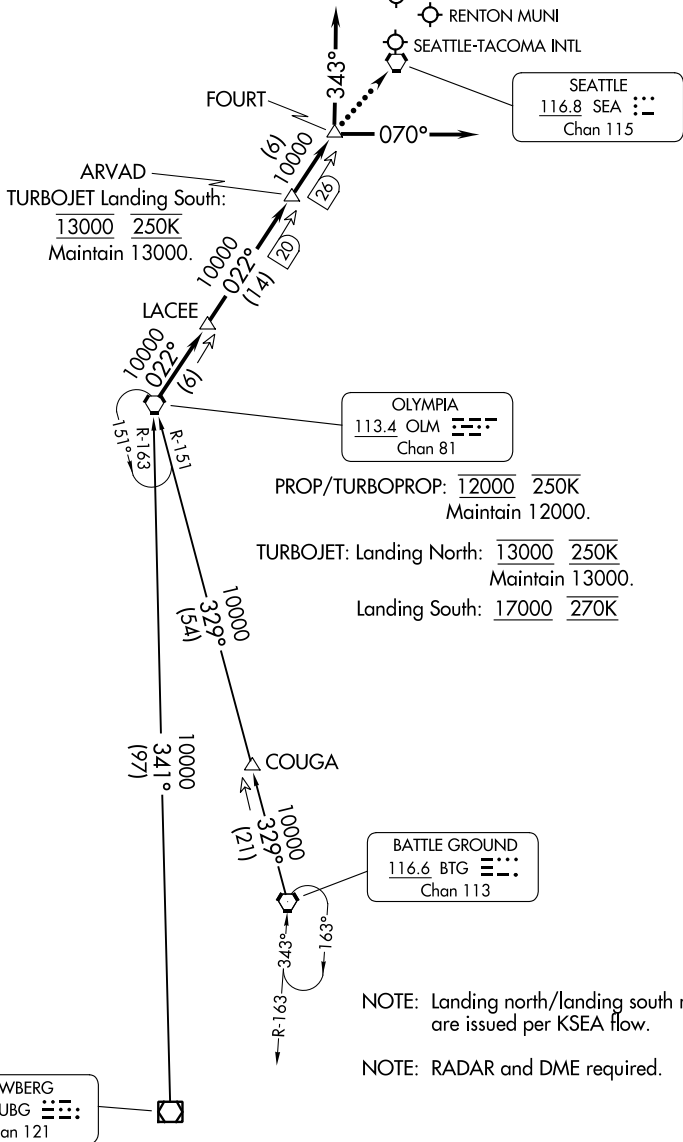
SEATTLE, WASHINGTON

SEATTLE APP CON
 125.6 273.45
 BFI ATIS
 127.75
 PAE ATIS
 128.65
 RTN ATIS
 126.95
 SEA D-ATIS
 118.0

SEATTLE PAINE FLD INTL

BOEING FLD/
 KING COUNTY INTL
 RENTON MUNI
 SEATTLE-TACOMA INTL

SEATTLE
 116.8 SEA
 Chan 115



NOTE: Landing north/landing south restrictions are issued per KSEA flow.

NOTE: RADAR and DME required.

(NARRATIVE ON FOLLOWING PAGE)

NOTE: Chart not to scale.

NW-1, 26 DEC 2024 to 23 JAN 2025

NW-1, 26 DEC 2024 to 23 JAN 2025

OLYMPIA TWO ARRIVAL

SEATTLE, WASHINGTON