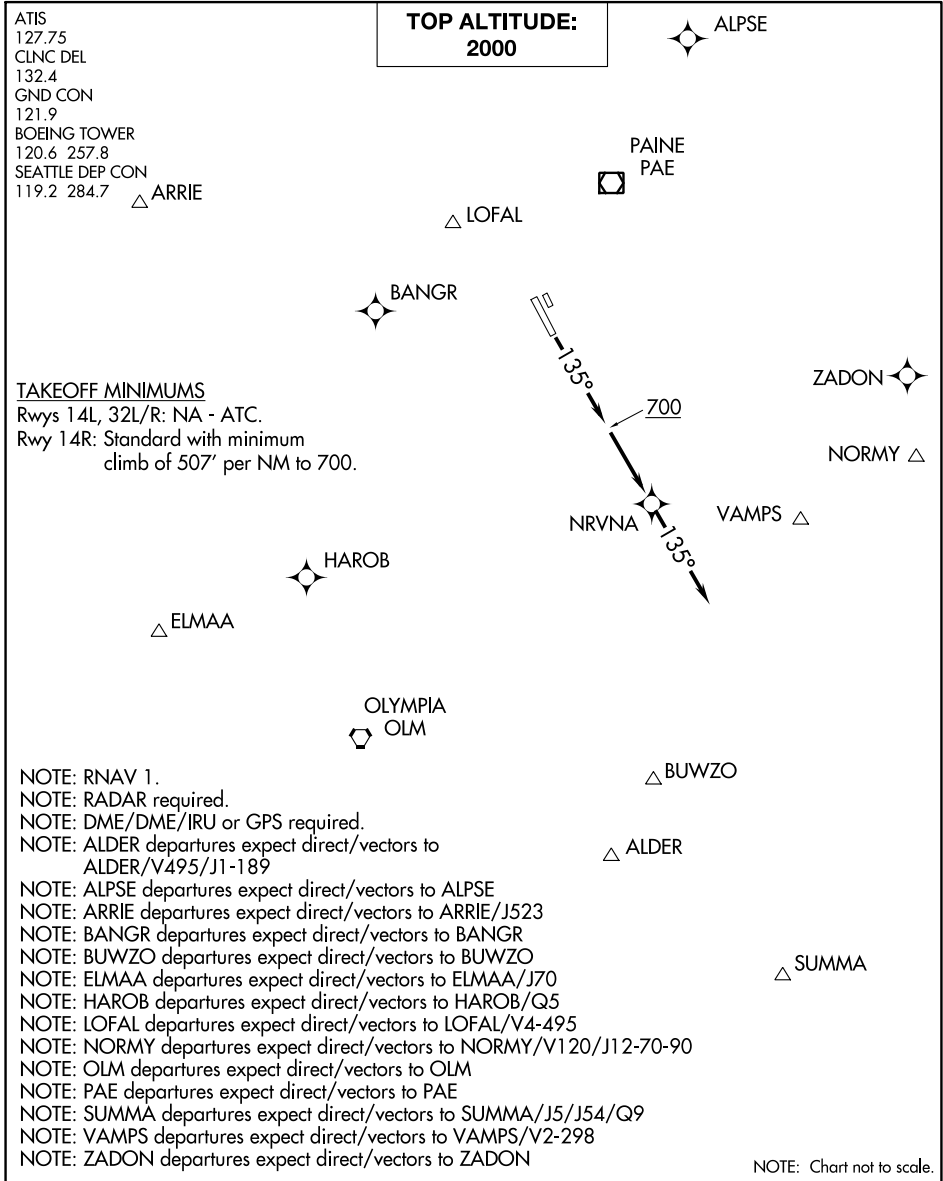


(NRVNA1.NRVNA) 23054

AL-384 (FAA)

BOEING FLD/KING COUNTY INTL (BFI)  
SEATTLE, WASHINGTON

# NRVNA ONE DEPARTURE (RNAV)



ATIS  
127.75  
CLNC DEL  
132.4  
GND CON  
121.9  
BOEING TOWER  
120.6 257.8  
SEATTLE DEP CON  
119.2 284.7

**TOP ALTITUDE:  
2000**

ALPSE

ARRIE

LOFAL

PAINE  
PAE

BANGR

ZADON

**TAKEOFF MINIMUMS**  
Rwys 14L, 32L/R: NA - ATC.  
Rwy 14R: Standard with minimum  
climb of 507' per NM to 700.

NORMY

NRVNA

VAMPS

HAROB

ELMAA

OLYMPIA  
OLM

BUWZO

- NOTE: RNAV 1.
- NOTE: RADAR required.
- NOTE: DME/DME/IRU or GPS required.
- NOTE: ALDER departures expect direct/vectors to ALDER/V495/J1-189
- NOTE: ALPSE departures expect direct/vectors to ALPSE
- NOTE: ARRIE departures expect direct/vectors to ARRIE/J523
- NOTE: BANGR departures expect direct/vectors to BANGR
- NOTE: BUWZO departures expect direct/vectors to BUWZO
- NOTE: ELMAA departures expect direct/vectors to ELMAA/J70
- NOTE: HAROB departures expect direct/vectors to HAROB/Q5
- NOTE: LOFAL departures expect direct/vectors to LOFAL/V4-495
- NOTE: NORMY departures expect direct/vectors to NORMY/V120/J12-70-90
- NOTE: OLM departures expect direct/vectors to OLM
- NOTE: PAE departures expect direct/vectors to PAE
- NOTE: SUMMA departures expect direct/vectors to SUMMA/J5/J54/Q9
- NOTE: VAMPS departures expect direct/vectors to VAMPS/V2-298
- NOTE: ZADON departures expect direct/vectors to ZADON

NOTE: Chart not to scale.

**DEPARTURE ROUTE DESCRIPTION**

**TAKEOFF RUNWAY 14R:** Climb heading 135° to 700, then direct NRVNA, then on track 135° for RADAR vectors to assigned route/fix, maintain 2000 or as assigned by ATC.  
Expect clearance to filed altitude/flight level within three minutes after departure.

**NRVNA ONE DEPARTURE (RNAV)**  
(NRVNA1.NRVNA) 12OCT17

SEATTLE, WASHINGTON  
BOEING FLD/KING COUNTY INTL (BFI)

NW-1, 26 DEC 2024 to 23 JAN 2025

NW-1, 26 DEC 2024 to 23 JAN 2025