

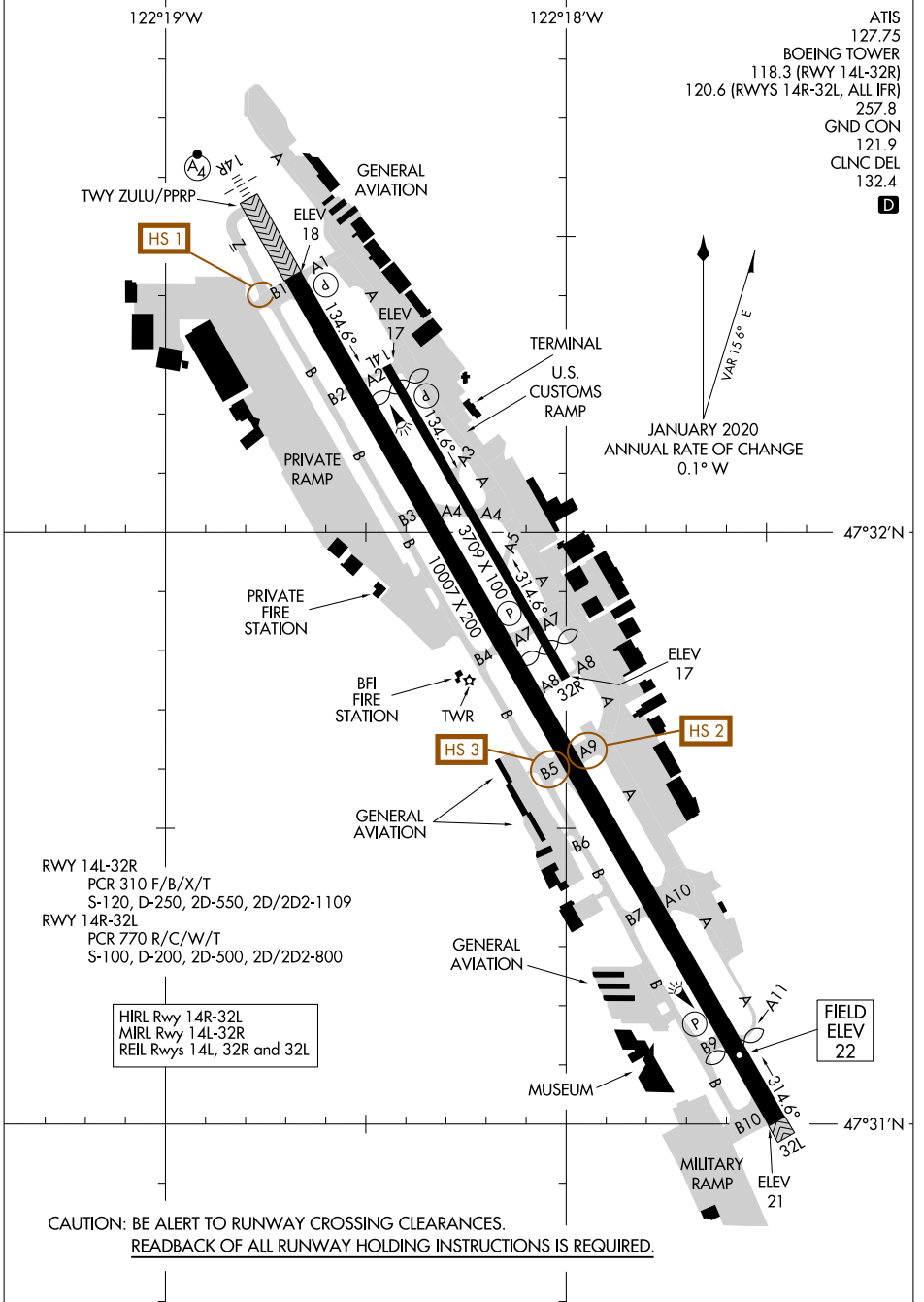
AIRPORT DIAGRAM

AL-384 (FAA)

BOEING FLD/KING COUNTY INTL (BFI)
SEATTLE, WASHINGTON

NW-1, 26 DEC 2024 to 23 JAN 2025

NW-1, 26 DEC 2024 to 23 JAN 2025



CAUTION: BE ALERT TO RUNWAY CROSSING CLEARANCES.
READEBACK OF ALL RUNWAY HOLDING INSTRUCTIONS IS REQUIRED.

AIRPORT DIAGRAM

SEATTLE, WASHINGTON
BOEING FLD/KING COUNTY INTL (BFI)