

LOC/DME I-HJT 111.95 Chan 56(Y)	APP CRS 036°	Rwy Idg TDZE Apt Elev 10000 645 645
-----------------------------------------------------	------------------------	-------------------------------------------------------------------------

ILS Z or LOC RWY 4L

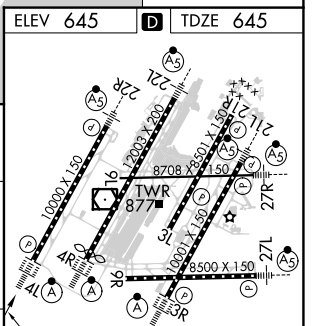
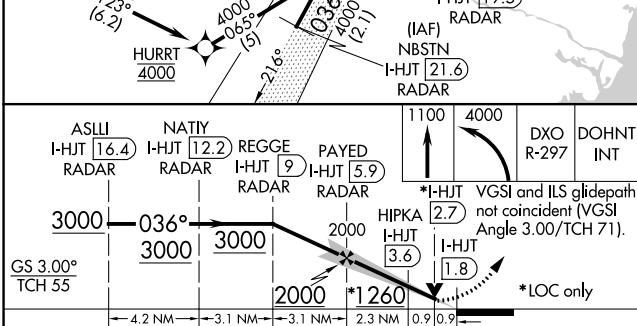
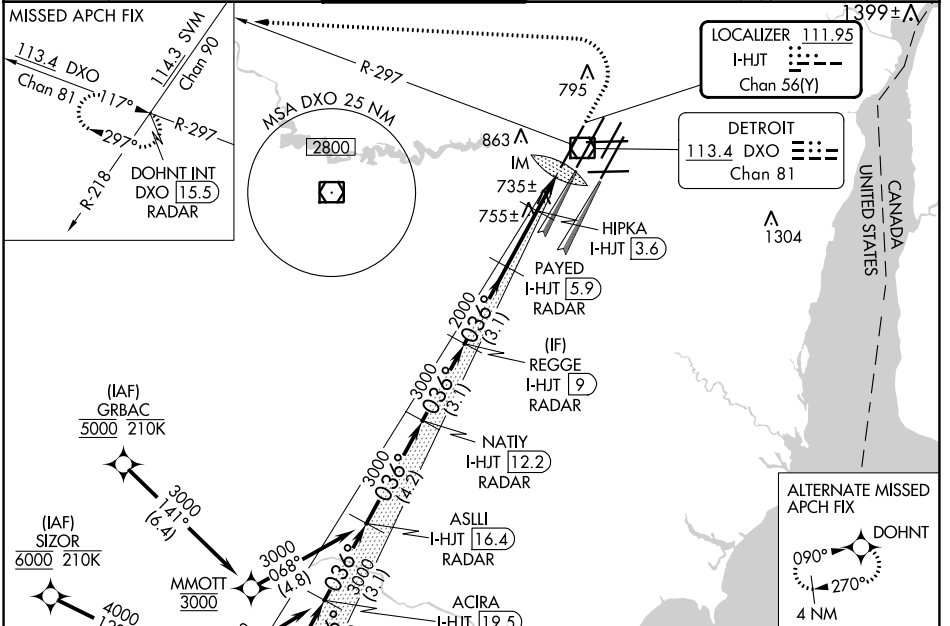
DETROIT METRO WAYNE COUNTY (DTW)

From GRBAC, SIZOR: RNAV 1-DME/DME/IRU or GPS required. Aircraft not DME/DME/IRU or GPS equipped - RADAR required for procedure entry. DME or RADAR required.

ALSF-2
MISSED APPROACH: Climb to 1100 then climbing left turn to 4000 on DXO VOR/DME R-297 to DOHNT INT/DXO 15.5 DME/RADAR and hold.

Simultaneous approach authorized.

D-ATIS 133.675	DETROIT APP CON 124.05 284.0	METRO TOWER 135.0 317.725	GND CON 121.8 (NW) 132.725 (SW)	CON 119.45 (NE) 119.25 (SE)	CLNC DEL 120.65	CPDLC
--------------------------	----------------------------------------	-------------------------------------	-----------------------------------------------------	-------------------------------------------------	---------------------------	-------



CATEGORY	A	B	C	D
S-ILS 4L	845/18 200 (200-½)			
S-LOC 4L	1260/24	615 (700-½)	1260-1¾	615 (700-1¾)
C CIRCLING	1260-1	615 (700-1)	1260-2	615 (700-2)
HIPKA FIX MINIMUMS (DME REQUIRED)				
S-LOC 4L	1000/24	355 (400-½)	1000/30	355 (400-¾)
C CIRCLING	1180-1	535 (600-1)	1180-1½	535 (600-1½)
			1240-2	595 (600-2)

ELEV 645	D TDZE 645
<p>TDZ/CL Rwy 3R, 4L, 4R and 22R REL Rwy 3L, 9L, 9R and 21R HIRL all runways</p>	
FAF to MAP 4.1 NM	
Knots	60 90 120 150 180
Min:Sec	4:06 2:44 2:03 1:38 1:22

EC-1, 03 OCT 2024 to 31 OCT 2024

EC-1, 03 OCT 2024 to 31 OCT 2024