

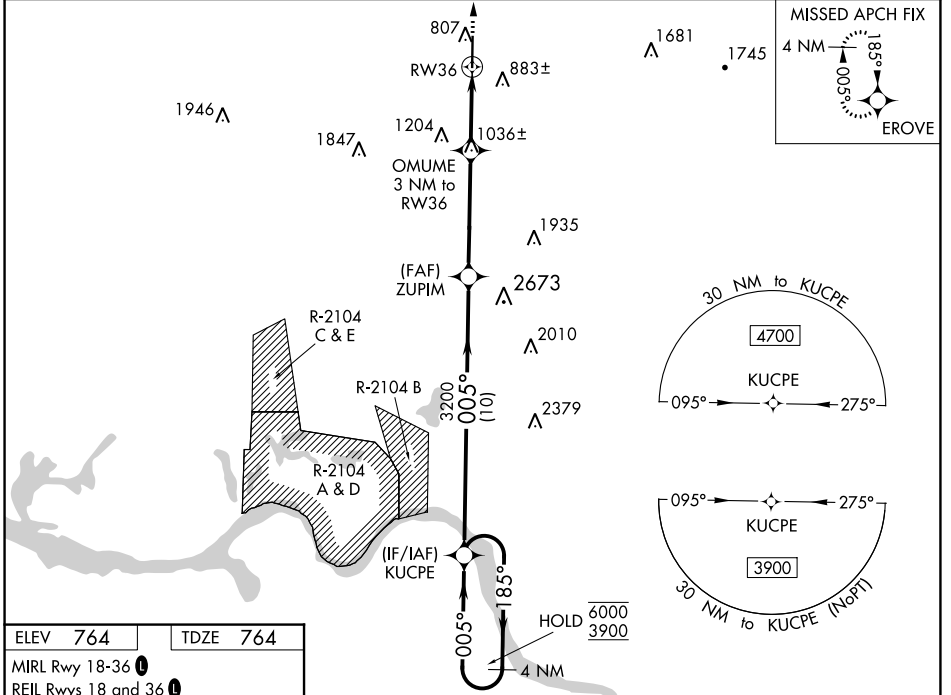
WAAS CH <b>53702</b> <b>W36A</b>	APP CRS <b>005°</b>	Rwy Idg TDZE <b>764</b> Apt Elev <b>764</b>	<b>6500</b>
--	------------------------	---	-------------

# RNAV (GPS) RWY 36

HUNTSVILLE EXEC TOM SHARP JR FLD (MDQ)

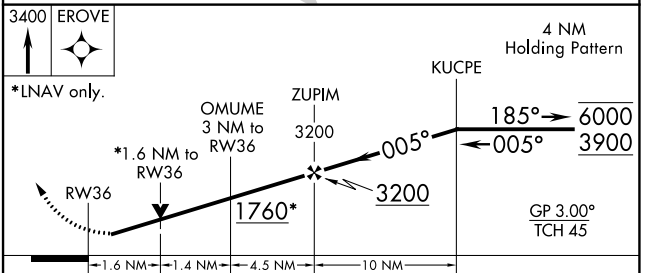
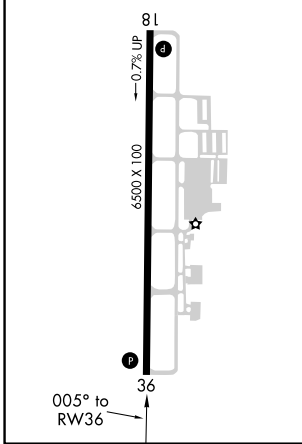
RNP APCH.	MISSED APPROACH: Climb to 3400 direct EROVE and hold.
For uncompensated Baro-VNAV systems, LNAV/VNAV NA below -16°C or above 54°C.	

AWOS-3PT <b>120.0</b>	HUNTSVILLE APP CON* <b>125.6 354.1</b>	GCO <b>121.725</b>	UNICOM <b>123.0 (CTAF) 0</b>
--------------------------	---	-----------------------	---------------------------------



ELEV <b>764</b>	TDZE <b>764</b>
-----------------	-----------------

MIRL Rwy 18-36   
 REIL Rwy 18 and 36



CATEGORY	A	B	C	D
LPV DA	964-3/4		200 (200-3/4)	
LNAV/VNAV DA	1250-1 5/8		486 (500-1 5/8)	
LNAV MDA	1300-1	536 (600-1)	1300-1 1/2	536 (600-1 1/2)
CIRCLING	1300-1	536 (600-1)	1560-2 1/4 796 (800-2 1/4)	2000-3 1236 (1300-3)

SE-4, 11 JUL 2024 to 08 AUG 2024

SE-4, 11 JUL 2024 to 08 AUG 2024