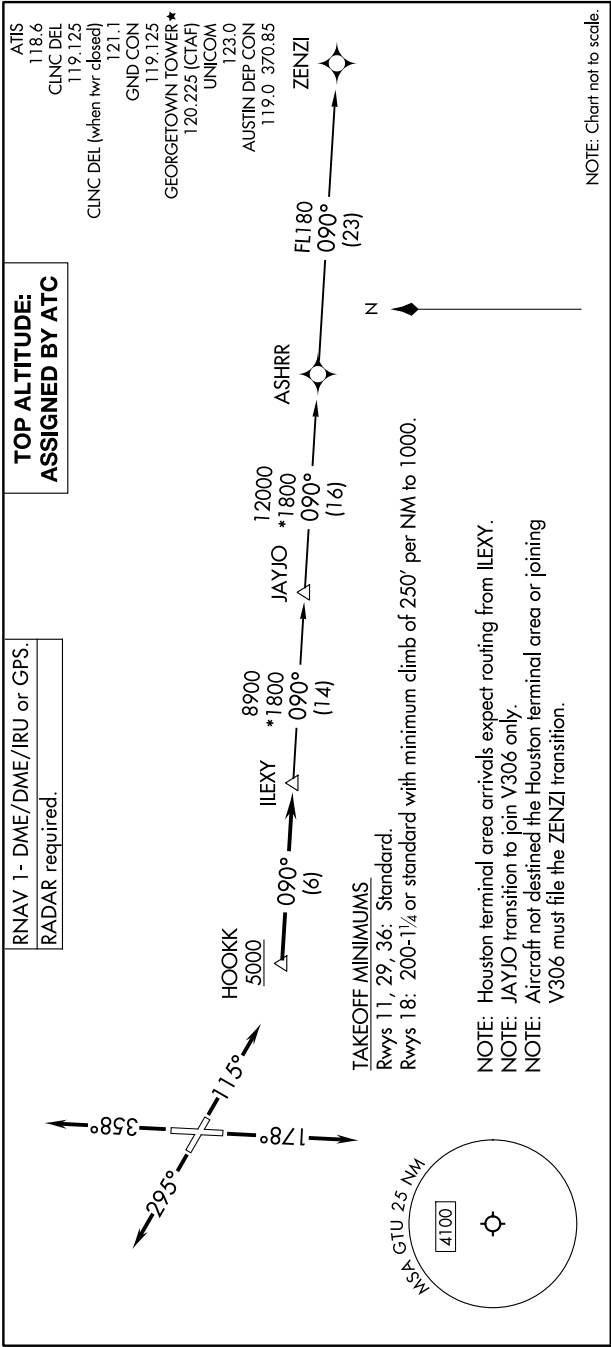


(ILEXY4.ILEXY) 23166

ILEXY FOUR DEPARTURE (RNAV) AL-5724 (FAA)

GEORGETOWN EXEC (GTU)
GEORGETOWN, TEXAS

SC-3, 11 JUL 2024 to 08 AUG 2024



DEPARTURE ROUTE DESCRIPTION

TAKEOFF RUNWAY 11: Climb on heading 115° or as assigned by ATC for vectors to cross HOOKK at or above 5000, thence . . .

TAKEOFF RUNWAY 18: Climb on heading 178° or as assigned by ATC for vectors to cross HOOKK at or above 5000, thence . . .

TAKEOFF RUNWAY 29: Climb on heading 295° or as assigned by ATC for vectors to cross HOOKK at or above 5000, thence . . .

TAKEOFF RUNWAY 36: Climb on heading 358° or as assigned by ATC for vectors to cross HOOKK at or above 5000, thence . . .

. . . on track 090° to IILEXY, then on transition. Maintain altitude assigned by ATC. Expect filed altitude 10 minutes after departure.

JAYJO TRANSITION (ILEXY4.JAYJO)
ZENZI TRANSITION (ILEXY4.ZENZI)

ILEXY FOUR DEPARTURE (RNAV) (ILEXY4.ILEXY) 15JUN23

GEORGETOWN, TEXAS
GEORGETOWN EXEC (GTU)

SC-3, 11 JUL 2024 to 08 AUG 2024