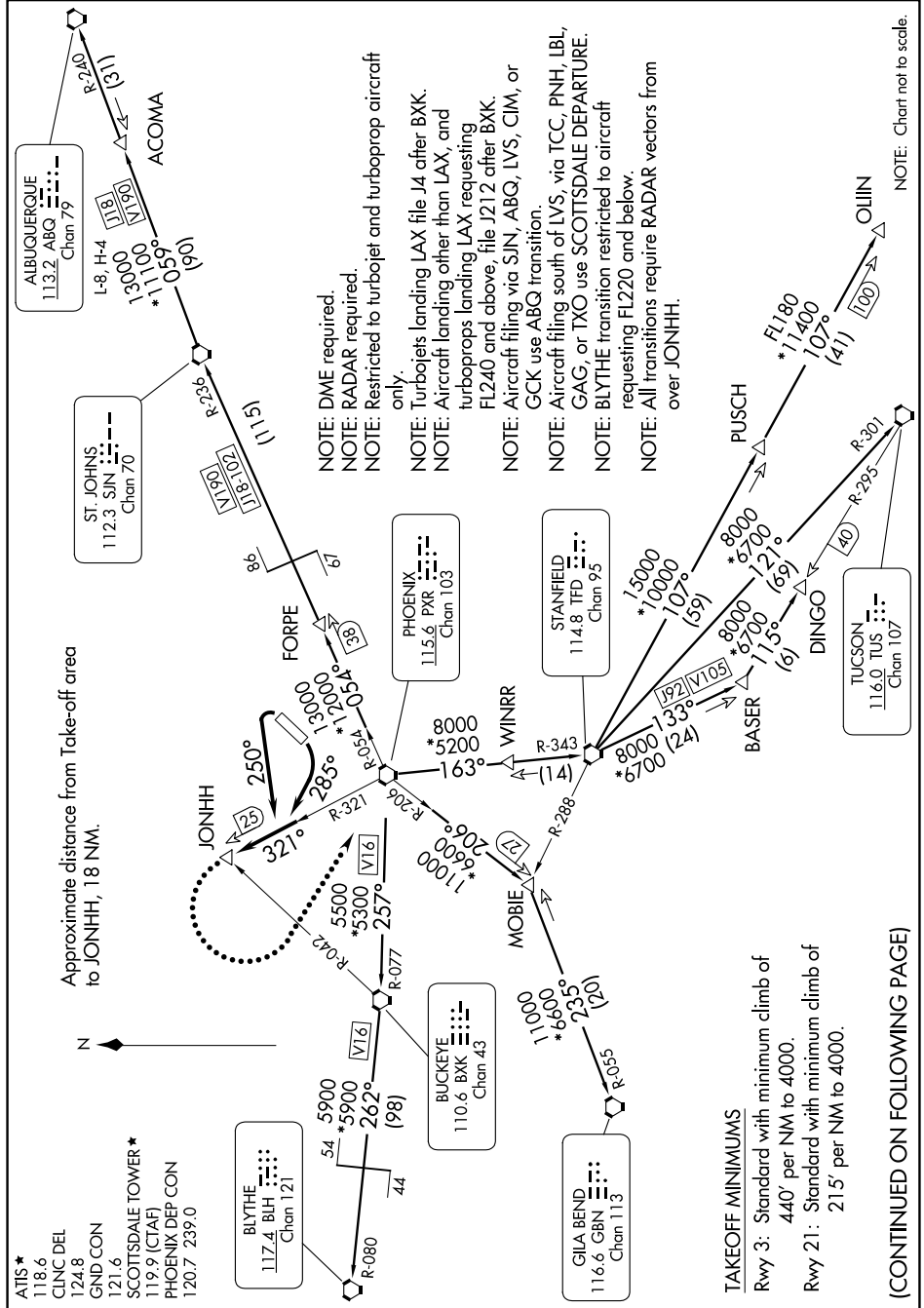


SCOTTSDALE SEVEN DEPARTURE

AL-5651 (FAA)

SCOTTSDALE (SDL)
SCOTTSDALE, ARIZONA

SW-4, 11 JUL 2024 to 08 AUG 2024



SW-4, 11 JUL 2024 to 08 AUG 2024

SCOTTSDALE SEVEN DEPARTURE

SCOTTSDALE, ARIZONA
SCOTTSDALE (SDL)

NOTE: Chart not to scale.

NOTE: DME required.
 NOTE: RADAR required.
 NOTE: Restricted to turbojet and turboprop aircraft only.

NOTE: Turbojets landing LAX file J4 after BXK.
 NOTE: Aircraft landing other than LAX, and turboprops landing LAX requesting FL240 and above, file J212 after BXK.

NOTE: Aircraft filing via SJN, ABQ, LVS, CIM, or GCK use ABQ transition.

NOTE: Aircraft filing south of LVS, via TCC, PNH, LBL, GAG, or TXO use SCOTTSDALE DEPARTURE.

NOTE: BLYTHE transition restricted to aircraft requesting FL220 and below.

NOTE: All transitions require RADAR vectors from over JONHH.