

WESTMINSTER, MARYLAND

AL-5533 (FAA)

23222

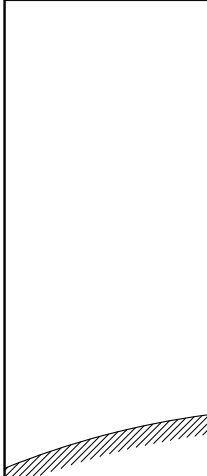
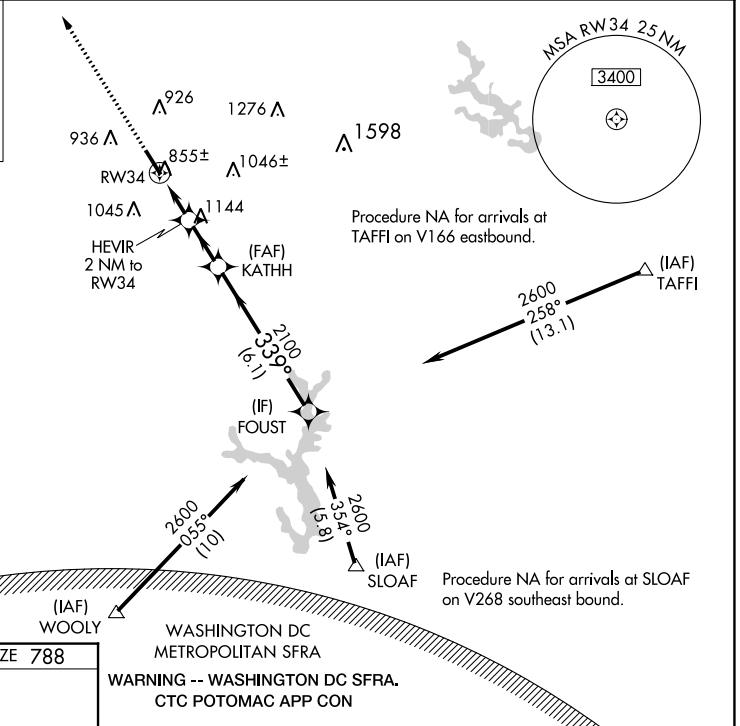
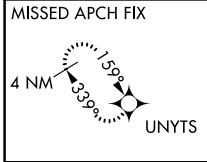
WAAS CH 82117 W34A	APP CRS 339°	Rwy Idg 5100 TDZE 788 Apt Elev 789
--	------------------------	---

RNAV (GPS) RWY 34

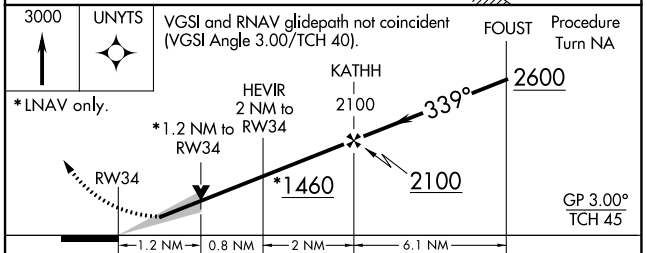
CARROLL COUNTY RGNL/JACK B POAGE FLD (DMW)

RNP APCH	For uncompensated Baro-VNAV systems, LNAV/VNAV NA below -16°C (4°F) or above 54°C (130°F).	MISSED APPROACH: Climb to 3000 direct UNYTS and hold
----------	--	--

AWOS-3 121.25	POTOMAC APP CON 125.525 291.625	GCO 121.725	UNICOM 122.7 (CTAF) 0
-------------------------	---	-----------------------	---------------------------------



ELEV 789	TDZE 788
-----------------	-----------------



CATEGORY	A	B	C	D
LPV DA	988-1 200 (200-1)			NA
LNAV/VNAV DA	1105-1¼ 317 (400-1¼)			NA
LNAV MDA	1180-1 392 (400-1)			NA
CIRCLING	1320-1 531 (600-1)	1400-1 611 (700-1)	1500-2 711 (800-2)	NA

WESTMINSTER, MARYLAND
Amdt 1C 20MAY21

CARROLL COUNTY RGNL/JACK B POAGE FLD (DMW)
39°36'N-77°00'W

RNAV (GPS) RWY 34

NE-3, 11 JUL 2024 to 08 AUG 2024

NE-3, 11 JUL 2024 to 08 AUG 2024