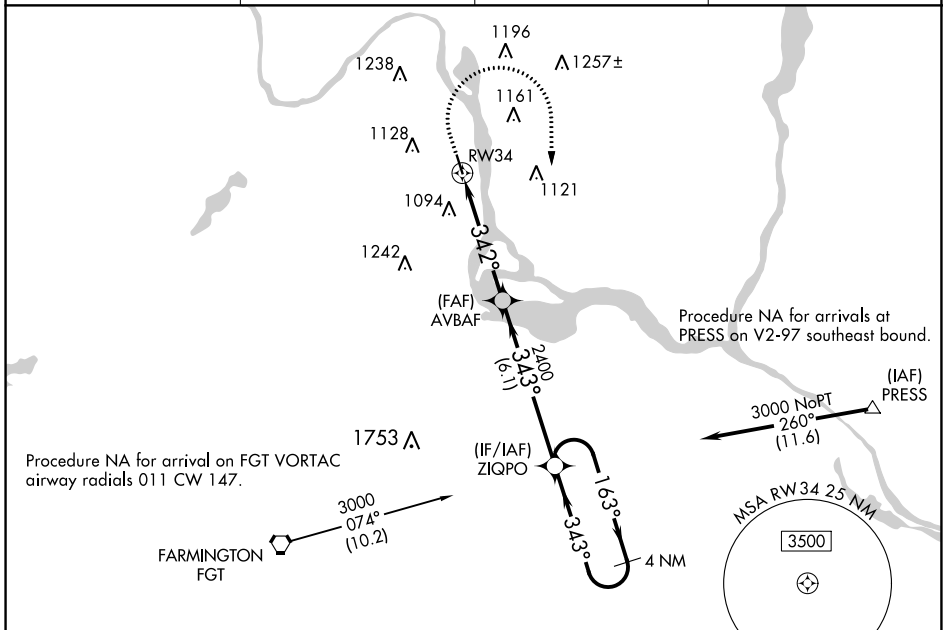


WAAS CH <b>99636</b> <b>W34A</b>	APP CRS <b>342°</b>	Rwy Idg TDZE Apt Elev	<b>4002</b> <b>820</b> <b>821</b>
--	------------------------	-----------------------------	---

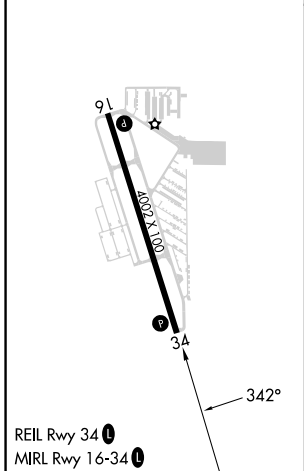
# RNAV (GPS) RWY 34

SOUTH ST PAUL MUNI/RICHARD E FLEMING FLD (SGS)

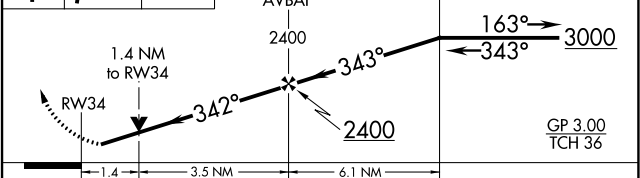
RNP APCH - GPS.		MISSED APPROACH: Climb to 1400 then climbing right turn to 3000 direct ZIQPO and hold.	
AWOS-3 <b>119.425</b>	MINNEAPOLIS APP CON <b>121.2 335.65</b>	CLNC DEL <b>118.2</b>	UNICOM <b>122.7 (CTAF) 0</b>



ELEV 821	TDZE 820
----------	----------



1400	3000	ZIQPO	VGSI and RNAV glidepath not coincident (VGSI Angle 3.00/TCH 40).	4 NM Holding Pattern
------	------	-------	--	----------------------



CATEGORY	A	B	C	D
LPV DA	1102-1		282 (300-1)	
LNAV/VNAV DA	1378-1½		558 (600-1½)	
LNAV MDA	1300-1	480 (500-1)	1300-1½	480 (500-1½)
<b>C</b> CIRCLING	1400-1 579 (600-1)	1540-1 719 (800-1)	1540-2 719 (800-2)	1620-2 ½ 799 (800-2½)

# RNAV (GPS) RWY 34

NC-1, 11 JUL 2024 to 08 AUG 2024

NC-1, 11 JUL 2024 to 08 AUG 2024