

NW-1, 11 JUL 2024 to 08 AUG 2024

DEPARTURE ROUTE DESCRIPTION

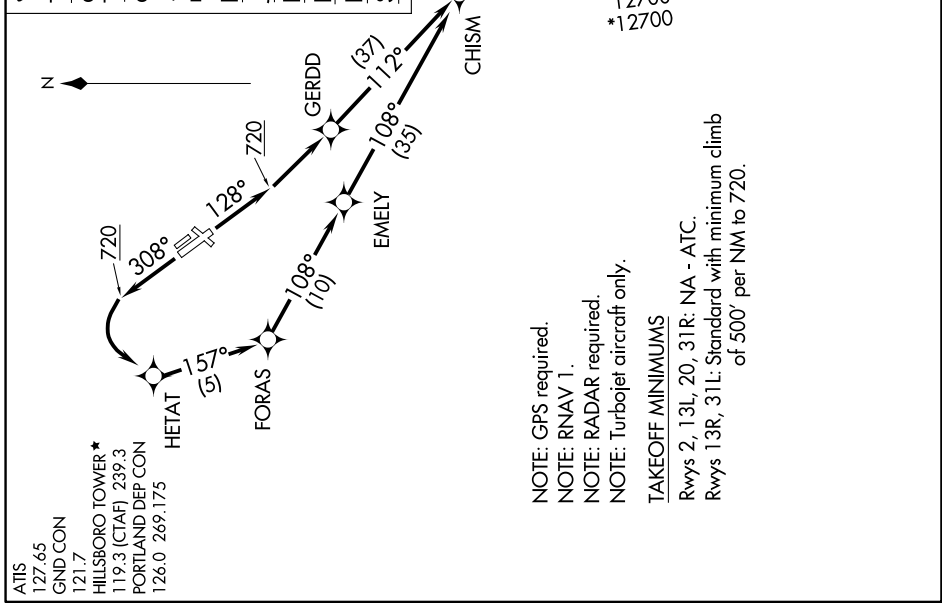
TAKEOFF RUNWAY 13R: Climb heading 128° to 720, then climbing left turn direct GERDD, then on depicted route to CHISM, thence

TAKEOFF RUNWAY 31L: Climb heading 308° to 720, then climbing left turn direct HETAT, then on depicted route to CHISM, thence

. . . . on (Transition). Maintain assigned altitude. Expect filed altitude 10 minutes after departure.

DESCHUTES TRANSITION [CHISM4.DSD]
JOGEN TRANSITION [CHISM4.JOGEN]
KIMBERLY TRANSITION [CHISM4.IMB]
PAWLI TRANSITION [CHISM4.PAWLI]
RIELY TRANSITION [CHISM4.RIELY]
SMIGE TRANSITION [CHISM4.SMIGE]

**TOP ALTITUDE:
ASSIGNED BY ATC**



NW-1, 11 JUL 2024 to 08 AUG 2024

NOTE: Chart not to scale.