

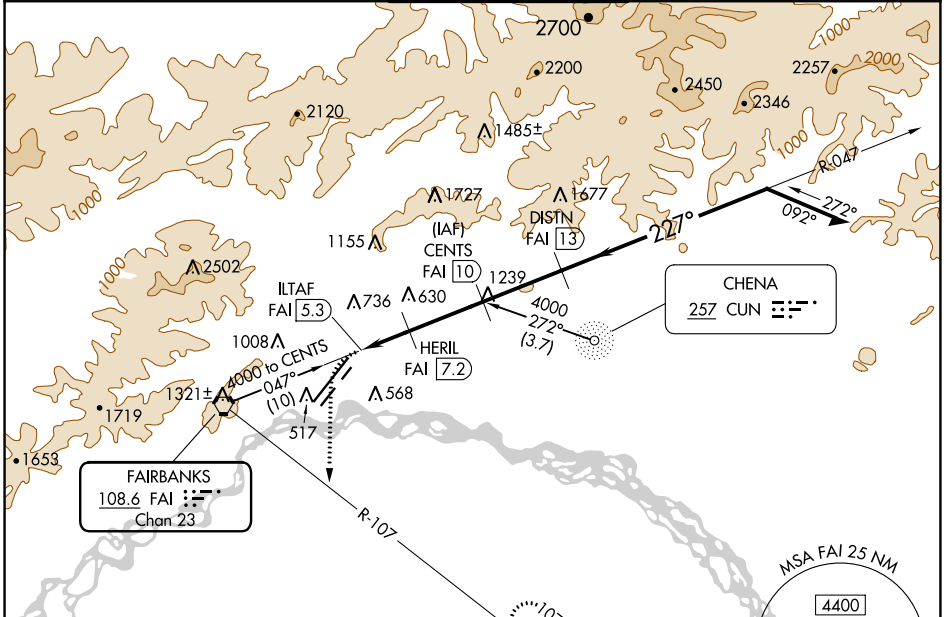
VORTAC FAI <b>108.6</b> Chan 23	APP CRS <b>227°</b>	Rwy Idg <b>11050</b> TDZE <b>439</b> Apt Elev <b>439</b>
---------------------------------------	------------------------	--

# TACAN RWY 20R

FAIRBANKS INTL (FAI) (PAFA)

	MALSR	MISSED APPROACH: Climbing left turn to 4000 on heading 160° and FAI VORTAC R-107 to KRNL/FAI 13 DME and hold, continue climb-in-hold to 4000.

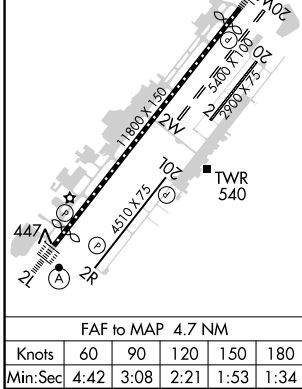
ATIS <b>124.4</b>	FAIRBANKS APP CON <b>125.35 363.2</b>	FAIRBANKS TOWER <b>118.3 257.8</b>	GND CON <b>121.9</b>	CLNC DEL <b>127.6</b>
----------------------	--	---------------------------------------	-------------------------	--------------------------



AK, 11 JUL 2024 to 05 SEP 2024

AK, 11 JUL 2024 to 05 SEP 2024

ELEV 439	<b>D</b>	TDZE 439
REIL Rwy 20L		
TDZ/CL Rwy 2L		
MIRL Rwy 2R-20L		
HIRL Rwy 2L-20R		



EMERGENCY SAFE ALTITUDE 100 NM 16000

4000	FAI R-107	KRNL	CENTS FAI 10	VGSi and descent angles not coincident (VGSi Angle 3.00/TCH 74).	
hdg 160°				047°	Remain within 15 NM
		HERIL FAI 7.2		227°	4000
		ILTAF FAI 5.3		3.00° TCH 60	3300
					2200
					1300
					DISTN FAI 13

0.7	1.8 NM	2.8 NM	3 NM
-----	--------	--------	------

CATEGORY	A	B	C	D	E
S-20R	880/55	441 (500-1)	880-1 $\frac{3}{8}$	441 (500-1 $\frac{3}{8}$ )	1000-1 $\frac{5}{8}$ 561 (600-1 $\frac{5}{8}$ )
<b>C</b> CIRCLING	880-1	900-1	900-1 $\frac{1}{2}$	1020-2	1120-2 $\frac{1}{2}$ 681 (700-2 $\frac{1}{2}$ )
	441 (500-1)	461 (500-1)	461 (500-1 $\frac{1}{2}$ )	581 (600-2)	