

(DRRLL4.DRRLL) 21336

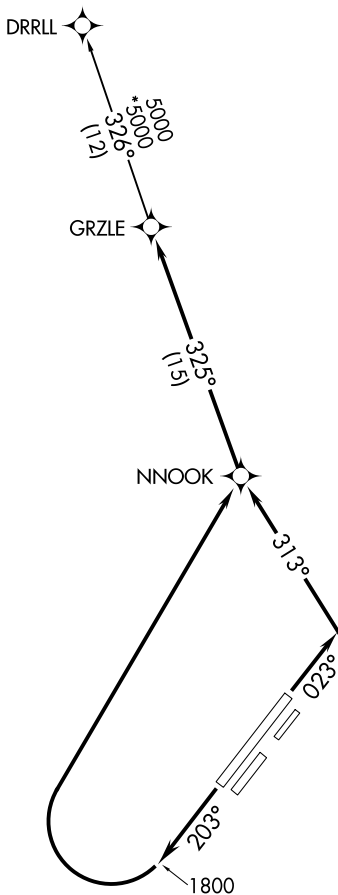
DRRLL FOUR DEPARTURE (RNAV)

AL-1234 (FAA)

FAIRBANKS INTL (FAI) (PAFA)
FAIRBANKS, ALASKA

ATIS
 124.4
 CLNC DEL
 127.6
 GND CON
 121.9
 FAIRBANKS TOWER
 118.3 257.8
 FAIRBANKS DEP CON
 125.35 363.2

**TOP ALTITUDE:
ASSIGNED BY ATC**



NOTE: GPS required.
NOTE: RNAV 1.

TAKEOFF MINIMUMS

Rwys 2, 2R, 2W, 20, 20L, 20W: NA - Air Traffic.

Rwy 2L: Standard with minimum climb of 290' per NM to 3100.

Rwy 20R: Standard with minimum climb of 270' per NM to 3200.

NOTE: Chart not to scale.



DEPARTURE ROUTE DESCRIPTION

TAKEOFF RUNWAY 2L: Climb heading 023° to intercept course 313° to NNOOK, then on track 325° to GRZLE, thence. . . .

TAKEOFF RUNWAY 20R: Climb heading 203° to 1800, then climbing right turn direct NNOOK, then on track 325° to GRZLE, thence. . . .

. . . .on DRRLL transition, maintain ATC assigned altitude, expect filed altitude ten minutes after departure.

DRRLL TRANSITION (DRRLL4.DRRLL)

DRRLL FOUR DEPARTURE (RNAV)

(DRRLL4.DRRLL) 02DEC21

FAIRBANKS, ALASKA
FAIRBANKS INTL (FAI) (PAFA)

AK, 11 JUL 2024 to 05 SEP 2024

AK, 11 JUL 2024 to 05 SEP 2024