

RNAV (GPS) RWY 24L

AL-903 [UN]

MIRAMAR MCAS (JOE FOSS FLD) (KNKX)

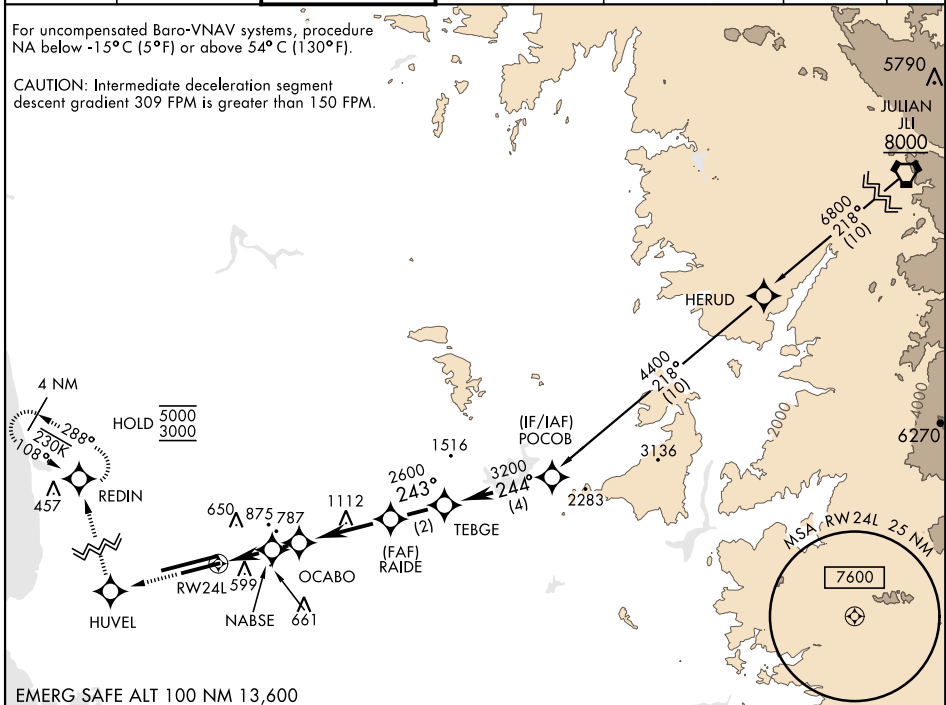
WAAS CH 54028 W24A	APCH CRS 243°	Rwy Idg TDZE Arprt Elev	8001 477 477
--------------------------	------------------	-------------------------------	--------------------

RNP APCH	MISSED APPROACH: Climb to 3000 direct HUVEL, 288° track to REDIN and hold.
----------	--

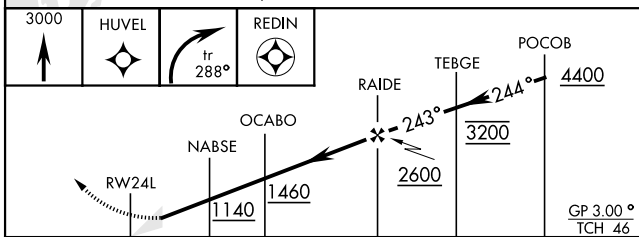
ATIS ★ 133.475 352.0	SOCAL APP CON 132.2 269.1	FOSS TOWER ★ 135.2 298.925	GND CON 128.625 307.325	CLNC DEL 125.975 254.325	LA CENTER 291.7	ASR/ PAR
----------------------------	---------------------------------	----------------------------------	-------------------------------	--------------------------------	--------------------	-------------

For uncompensated Baro-VNAV systems, procedure NA below -15°C (5°F) or above 54°C (130°F).

CAUTION: Intermediate deceleration segment descent gradient 309 FPM is greater than 150 FPM.

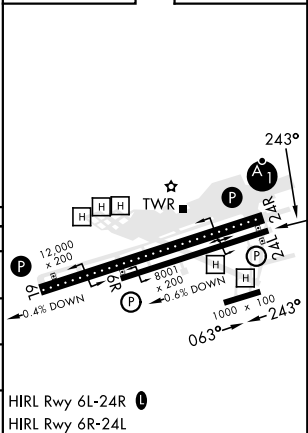


EMERG SAFE ALT 100 NM 13,600



ELEV 477	TDZE 477
----------	----------

CATEGORY	A	B	C	D
LPV DA	677-¾		200	(200-¾)
LNAV/VNAV DA	730-¾ 253 (300-¾)	741-7/8 264 (300-7/8)	749-7/8 272 (300-7/8)	760-7/8 283 (300-7/8)
LNAV MDA	960-1	483 (500-1)	960-1 3/8	483 (500-1 3/8)
CIRCLING	960-1	483 (500-1)	960-1 1/2 483 (500-1 1/2)	1180-2 1/4 703 (800-2 1/4)



RNAV (GPS) RWY 24L

SW-3, 11 JUL 2024 to 08 AUG 2024

SW-3, 11 JUL 2024 to 08 AUG 2024