

SAN DIEGO, CALIFORNIA

# ILS Y or LOC/DME Y RWY 24R

LOC/DME I-NKX  
111.15  
Chan 48 (Y)

APCH CRS  
243°

Rwy Ldg 8001 24R 12,000  
TDZE 477 475  
Arpt Elev 477 477

AL-903 [USN]

MIRAMAR MCAS (JOE FOSS FLD) (KNKX)

TACAN or RADAR required.



MISSED APPROACH: Climb to 1500, then climbing right turn to 3000 via heading 340°. Expect radar vectors.

▼ \* When ALS inop, increase vis to 3/4 mile.  
\*\* When ALS inop, increase CAT AB vis to 1 mile, CAT CDE vis to 1 1/2 miles.  
\*\*\* CAT E circling not authorized S of Rwy 6R-24L.

ATIS ★  
133.475  
352.0

SOCAL APP CON  
132.2  
269.1

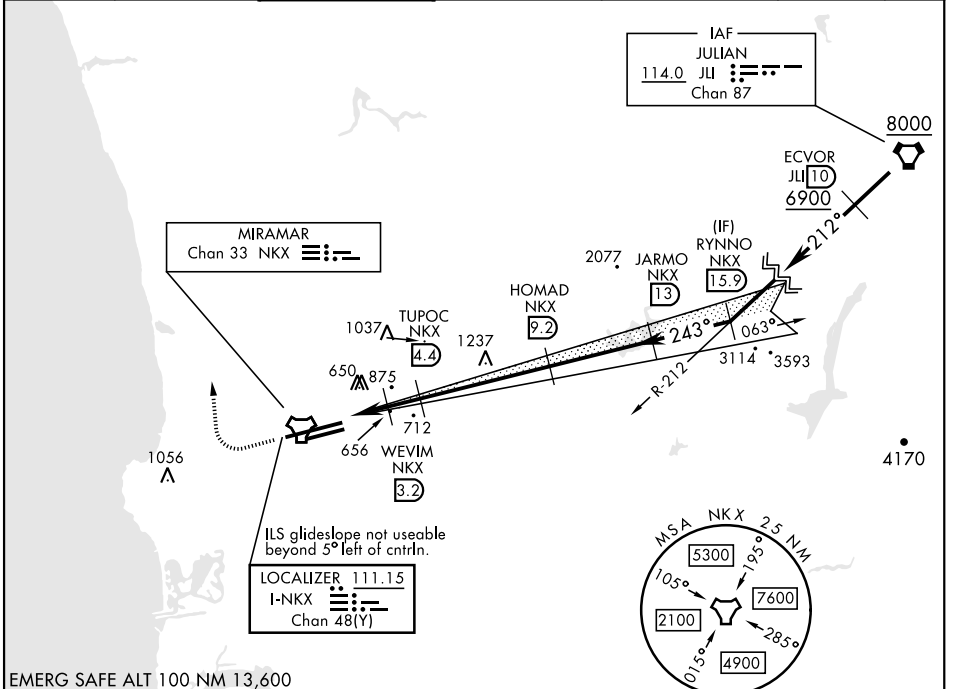
FOSS TOWER ★  
135.2  
298.925

GND CON  
128.625  
307.325

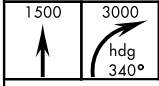
CLNC DEL  
125.975  
254.325

LA CENTER  
291.7

ASR/  
PAR



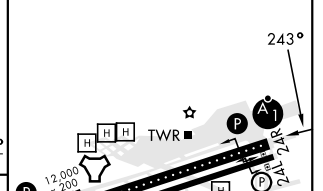
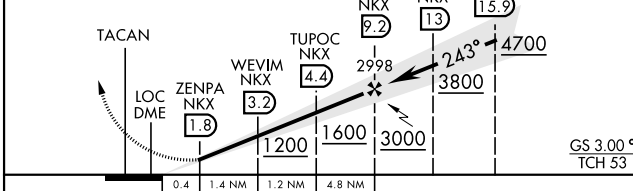
EMERG SAFE ALT 100 NM 13,600



VGSI and descent angles not coincident.

ELEV 477

TDZE 24L 477  
TDZE 24R 475



CATEGORY	A	B	C	D	E
S-ILS 24R*	675 - 1/2		200	(200-1/2)	
S-LOC/DME 24R**	920-1/2	445 (500-1/2)	920-7/8	445 (500-7/8)	
SIDESTEP 24L	920-1	443 (500-1)	920-1 1/2 443 (500-1 1/2)	920-2 443 (500-2)	
CIRCLING***	940-1 463 (500-1)	960-1 483 (500-1)	960-1 1/2 483 (500-1 1/2)	1180-2 1/4 703 (800-2 1/4)	1360-3 883 (900-3)

HIRL Rwy 6L-24R  
HIRL Rwy 6R-24L

SAN DIEGO, CALIFORNIA  
Orig 14JUL22

32°52'N-117°09'W

MIRAMAR MCAS (JOE FOSS FLD) (KNKX)

# ILS Y or LOC/DME Y RWY 24R

SW-3, 11 JUL 2024 to 08 AUG 2024