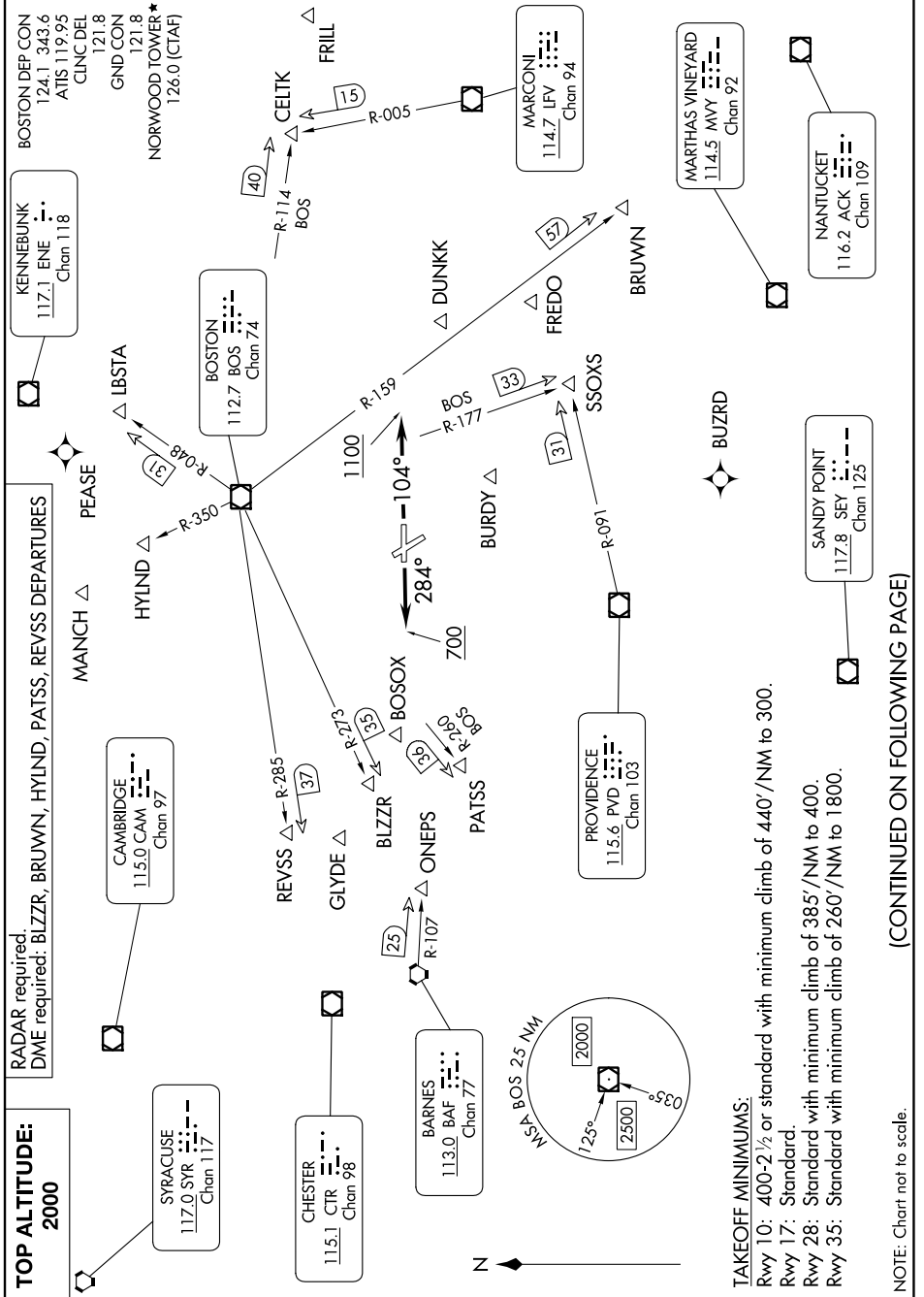


# NORWOOD FIVE DEPARTURE

NE-1, 11 JUL 2024 to 08 AUG 2024



# NORWOOD FIVE DEPARTURE

(CONTINUED ON FOLLOWING PAGE)

NE-1, 11 JUL 2024 to 08 AUG 2024

NOTE: Chart not to scale.

**TAKEOFF MINIMUMS:**  
 Rwy 10: 400-2 ½ or standard with minimum climb of 440'/NM to 300.  
 Rwy 17: Standard.  
 Rwy 28: Standard with minimum climb of 385'/NM to 400.  
 Rwy 35: Standard with minimum climb of 260'/NM to 1800.