

LOC I-GNJ <b>111.75</b>	APP CRS <b>226°</b>	Rwy Idg TDZE Apt Elev	<b>6604</b> <b>979</b> <b>979</b>
----------------------------	------------------------	-----------------------------	---

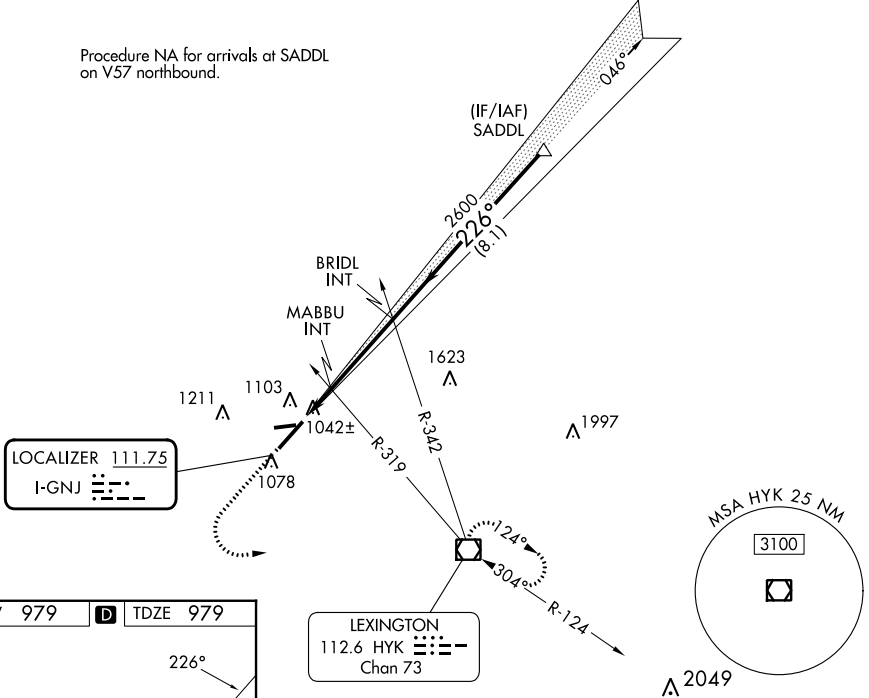
# ILS or LOC RWY 22 BLUE GRASS (LEX)

**⚠** When local altimeter setting not received, use Frankfort altimeter setting: increase S-ILS 22 DA to 1241 feet and all visibilities  $\frac{1}{8}$  SM; increase all MDAs 80 feet and visibility Cats C and D  $\frac{1}{4}$  SM.

**MISSED APPROACH:** Climb to 1400 then climbing left turn to 3100 direct HYK VOR/DME and hold, continue climb-in-hold to 3100.

ATIS <b>126.3</b>	LEXINGTON APP CON <b>120.15 259.3</b> (040°-220°) <b>120.75 298.9</b> (221°-039°)	LEXINGTON TOWER <b>119.1 257.8</b>	GND CON <b>121.9</b>	CLNC DEL <b>132.35</b>
----------------------	---	---------------------------------------	-------------------------	---------------------------

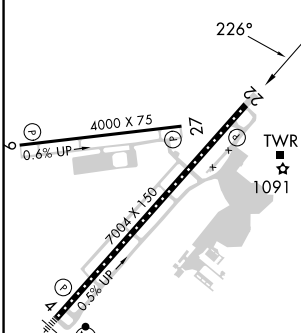
Procedure NA for arrivals at SADDL on V57 northbound.



SE-1, 11 JUL 2024 to 08 AUG 2024

SE-1, 11 JUL 2024 to 08 AUG 2024

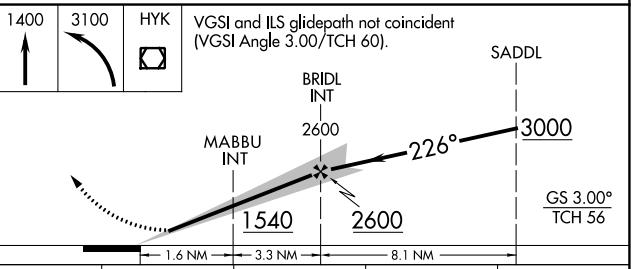
ELEV 979	<b>D</b>	TDZE 979
----------	----------	----------



TDZ/CL Rwy 4  
REIL Rwy 9, 22 and 27  
HIRL Rwy 4-22  
MIRL Rwy 9-27

FAF to MAP 4.9 NM

Knots	60	90	120	150	180
Min:Sec	4:54	3:16	2:27	1:58	1:38



CATEGORY	A	B	C	D
S-ILS 22	1179- $\frac{3}{4}$ 200 (200- $\frac{3}{4}$ )			
S-LOC 22	1360-1	381 (400-1)	1360-1 $\frac{1}{8}$	381 (400-1 $\frac{1}{8}$ )
<b>C</b> CIRCLING	1420-1 441 (500-1)	1440-1 461 (500-1)	1520-1 $\frac{1}{2}$ 541 (600-1 $\frac{1}{2}$ )	1600-2 621 (700-2)