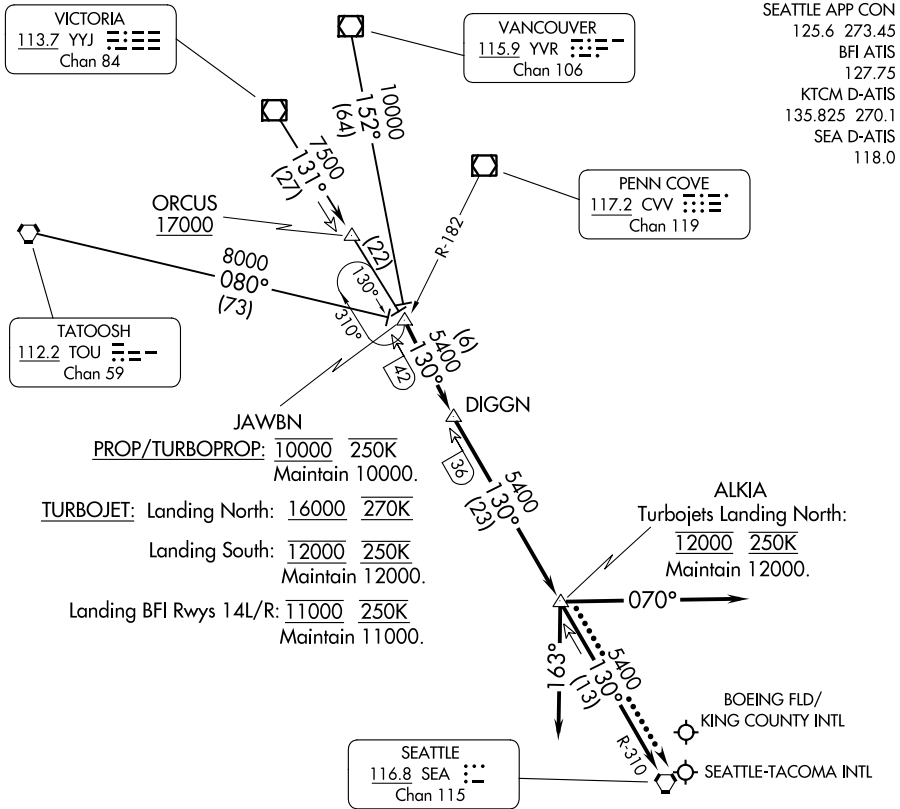


JAWBN SIX ARRIVAL

AL-582 (FAA)

SEATTLE, WASHINGTON



NOTE: RADAR and DME required.

MCCORD FLD (JOINT BASE LEWIS-MCCORD) @

NOTE: Chart not to scale.

ARRIVAL ROUTE DESCRIPTION

TATOOSH TRANSITION (TOU.JAWBN6): From over TOU VORTAC on TOU R-080 to JAWBN. Thence . . .

VANCOUVER TRANSITION (YVR.JAWBN6): From over YVR VOR/DME on YVR R-152 to JAWBN. Thence . . .

VICTORIA TRANSITION (YYJ.JAWBN6): From over YYJ VOR/DME on YYJ R-131 to JAWBN. Thence . . .

. . . from over JAWBN on SEA R-310 to DIGGN then on SEA R-310 to ALKIA thence . . .

LANDING SOUTH: depart ALKIA heading 070° for vectors to final approach course.

LANDING NORTH: depart ALKIA heading 163° for vectors to final approach course.

LANDING MCCORD FLD: depart ALKIA proceed direct SEA VORTAC.

LOST COMMUNICATIONS: After ALKIA, proceed direct SEA VORTAC.

JAWBN SIX ARRIVAL

SEATTLE, WASHINGTON

NW-1, 11 JUL 2024 to 08 AUG 2024

NW-1, 11 JUL 2024 to 08 AUG 2024