

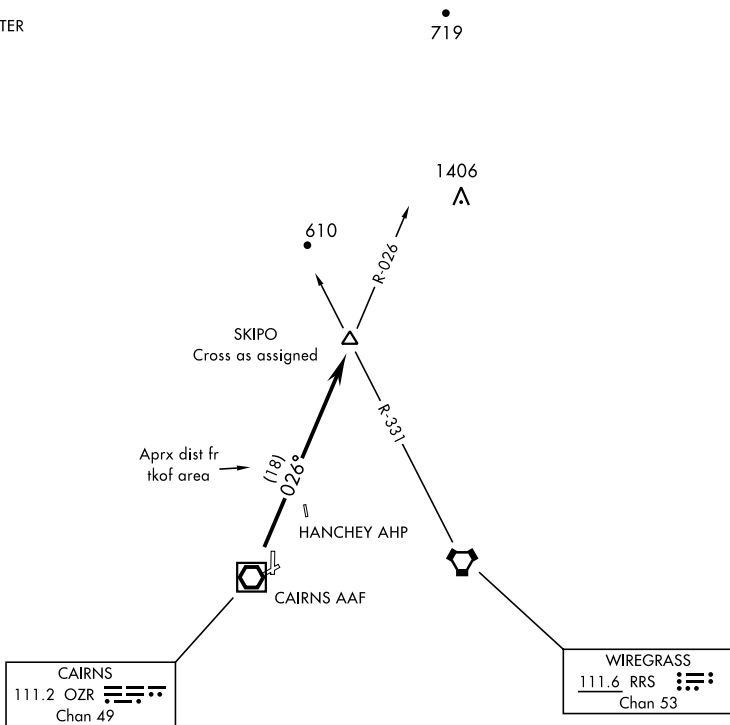
# SKIPO-TWO DEPARTURE (SKIPO2.SKIPO)

CAIRNS AAF (KOZR)  
FORT NOVOSEL, ALABAMA

RADAR required

ATIS 111.2 316.15  
 CLNC DEL ★  
 118.075 380.1  
 GND CON ★  
 121.9 288.25  
 TOWER ★  
 135.2 (CTAF) 248.55  
 DEP CON ★  
 125.4 327.125  
 JACKSONVILLE CENTER  
 134.3 322.55

[USA]



SE-4, 11 JUL 2024 to 08 AUG 2024

SE-4, 11 JUL 2024 to 08 AUG 2024

## DEPARTURE ROUTE DESCRIPTION

- TAKEOFF RWY 6 or RWY 18: Climbing left turn heading 360° ....
- TAKEOFF RWY 24: Climbing right turn heading 050° ....
- TAKEOFF RWY 36: Climb heading 360° ....
- TAKEOFF FROM CENTER OF HELIPAD PAD D1: Climb heading 015° ....
- TAKEOFF FROM CENTER OF HELIPAD PAD D2: Climb heading 360° ....

Maintain 2000, expect clearance to requested altitude/flight level ten (10) minutes after departure.

.... Intercept OZR VOR/DME R-026 to SKIPO INT.

# SKIPO-TWO DEPARTURE (SKIPO2.SKIPO)

FORT NOVOSEL, ALABAMA  
CAIRNS AAF (KOZR)