

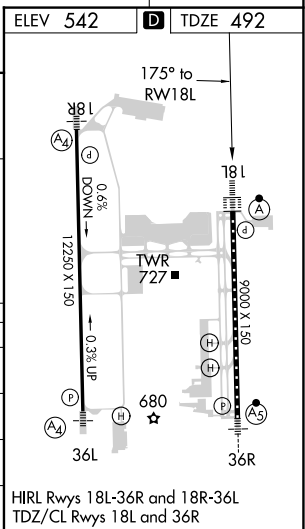
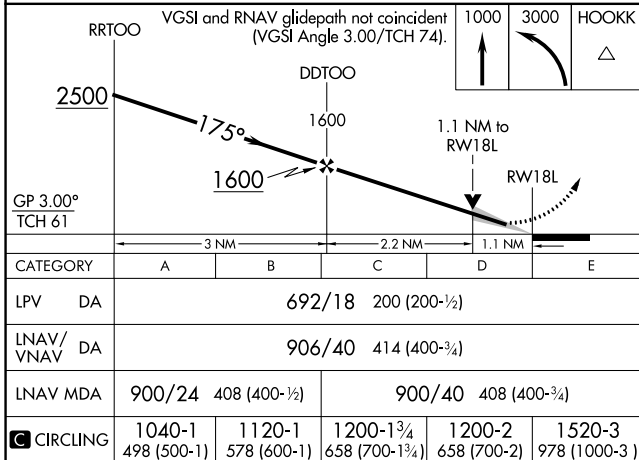
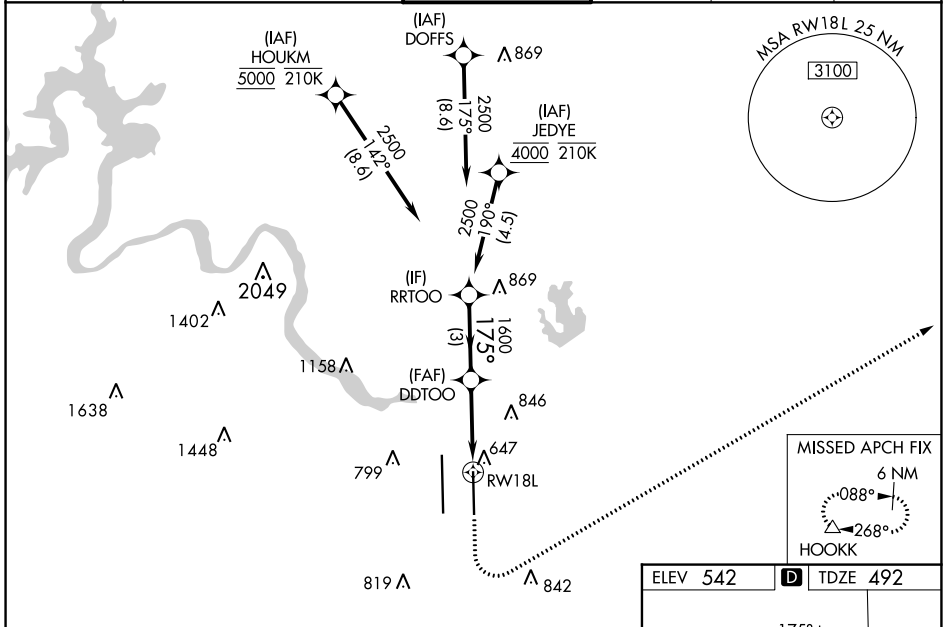
WAAS CH <b>62829</b> <b>W18A</b>	APP CRS <b>175°</b>	Rwy Idg TDZE <b>492</b> Apt Elev <b>542</b>	<b>9000</b>
--	------------------------	---	-------------

# RNAV (GPS) Y RWY 18L

AUSTIN-BERGSTROM INTL (AUS)

RNP APCH-GPS.		ALSIF-2 	MISSED APPROACH: Climb to 1000 then climbing left turn to 3000 direct HOOKK and hold.
<p><b>⚠</b> Simultaneous approach authorized. LNAV procedure NA during simultaneous operations. Use of FD or AP required during simultaneous operations. For uncompensated Baro-VNAV systems, LNAV/VNAV NA below -5°C or above 54°C. For inop ALS, increase LPV Cat E visibility to RVR 4000, LNAV/VNAV visibility all Cats to RVR 6000, and LNAV visibility Cats C, D, and E to RVR 6000.</p>			

D-ATIS <b>124.4</b>	AUSTIN APP CON <b>127.225 317.65</b> (EAST) <b>120.875 270.25</b> (SOUTH) <b>119.0 370.85</b> (WEST)	AUSTIN TOWER <b>121.0 281.5</b>	GND CON <b>121.9 348.6</b>	CLNC DEL <b>125.5 263.0</b>	CPDLC
------------------------	---	------------------------------------	-------------------------------	--------------------------------	-------



SC-3, 11 JUL 2024 to 08 AUG 2024

SC-3, 11 JUL 2024 to 08 AUG 2024