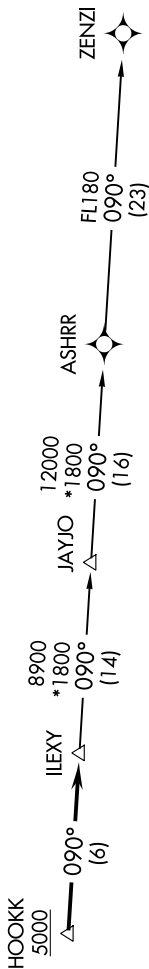


SC-3, 11 JUL 2024 to 08 AUG 2024

**TOP ALTITUDE:
ASSIGNED BY ATC**

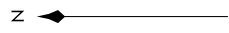
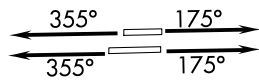
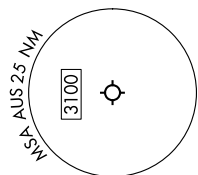
RNAV 1 - DME/DME/IRU or GPS.
RADAR required.

- D-ATIS 124.4
- CINC DEL 125.5 263.0
- CPDLC
- GND CON 121.9 348.6
- AUSTIN TOWER 121.0 281.5
- AUSTIN DEP CON 127.225 317.65



TAKEOFF MINIMUMS

Rwys 18L/R: Standard.
Rwys 36L/R: Standard with minimum climb of 240' per NM to 2600.



NOTE: Houston terminal area arrivals expect routing from ILEXY.
 NOTE: JAYJO transition to join V306 only.
 NOTE: Aircraft not destined the Houston terminal area or joining V306 must file the ZENZI transition.

NOTE: Chart not to scale.

DEPARTURE ROUTE DESCRIPTION

TAKEOFF RUNWAYS 18L/R: Climb on heading 175° or as assigned by ATC for vectors to cross HOOKK at or above 5000, then...
 TAKEOFF RUNWAYS 36L/R: Climb on heading 355° or as assigned by ATC for vectors to cross HOOKK at or above 5000, then...
 ... on track 090° to ILEXY, then on transition. Maintain altitude assigned by ATC. Expect filed altitude 10 minutes after departure.

JAYJO TRANSITION (ILEXY4.JAYJO)
 ZENZI TRANSITION (ILEXY4.ZENZI)