

# AUSTIN SIX DEPARTURE

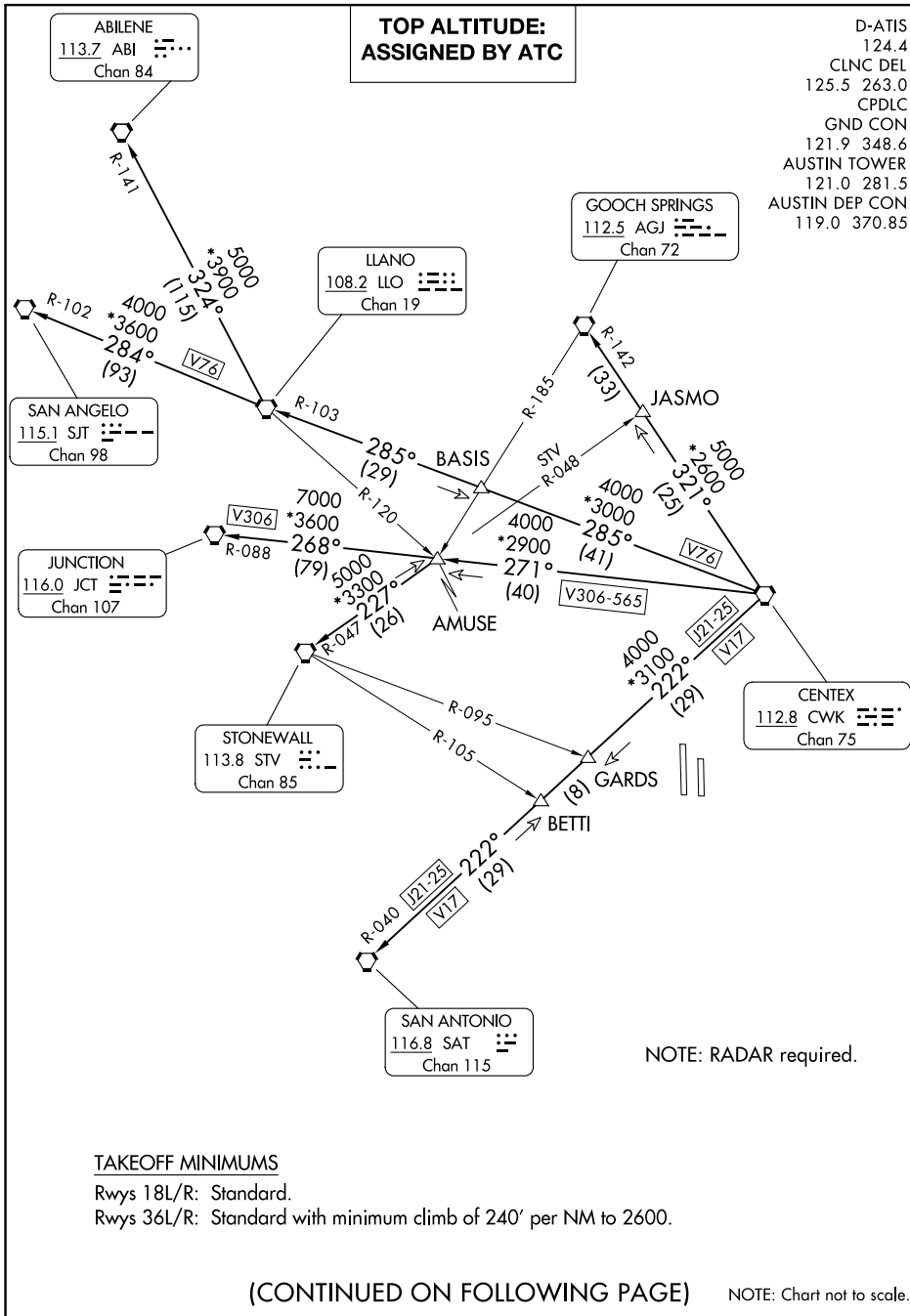
AL-556 (FAA)

AUSTIN-BERGSTROM INTL (AUS)

AUSTIN, TEXAS

**TOP ALTITUDE:  
ASSIGNED BY ATC**

- D-ATIS 124.4
- CLNC DEL 125.5 263.0
- CPDLC
- GND CON 121.9 348.6
- AUSTIN TOWER 121.0 281.5
- AUSTIN DEP CON 119.0 370.85



**TAKEOFF MINIMUMS**

Rwys 18L/R: Standard.

Rwys 36L/R: Standard with minimum climb of 240' per NM to 2600.

(CONTINUED ON FOLLOWING PAGE)

NOTE: Chart not to scale.

# AUSTIN SIX DEPARTURE

AUSTIN, TEXAS

AUSTIN-BERGSTROM INTL (AUS)

SC-3, 11 JUL 2024 to 08 AUG 2024

SC-3, 11 JUL 2024 to 08 AUG 2024