

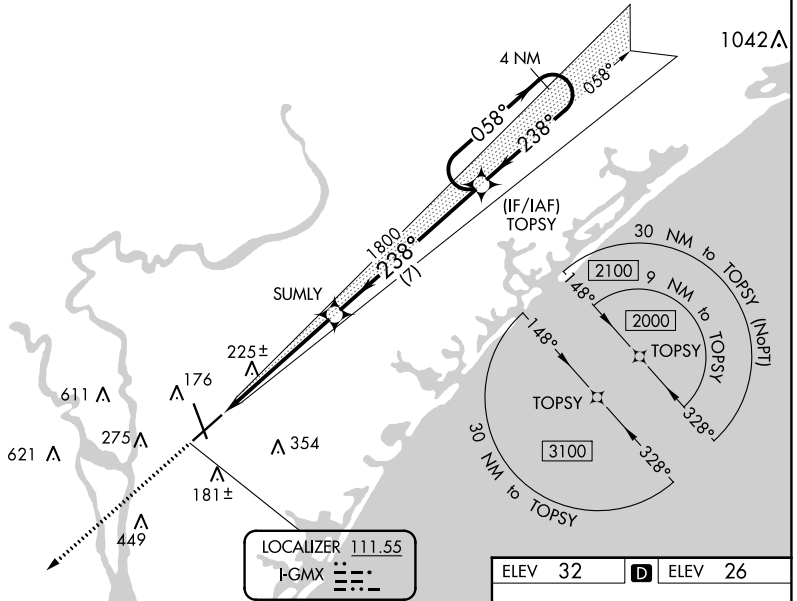
LOC I-GMX 111.55	APP CRS 238°	Rwy Idg 8016 TDZE 26 Apt Elev 32
----------------------------	------------------------	---

ILS Z RWY 24

WILMINGTON INTL (ILM)

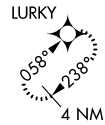
<p>RNAV 1-GPS required. **RVR 1800 authorized with use of FD or AP or HUD to DA.</p>		<p>MALSRR AS</p>	<p>MISSED APPROACH: Climb to 3100 direct LURKY and hold.</p>	
<p>ATIS 124.975</p>	<p>WILMINGTON APP CON * 118.25 284.65 (164°-343°) 135.75 317.425 (344°-163°)</p>	<p>WILMINGTON TOWER * 119.9 (CTAF) 239.3</p>	<p>GND CON 121.9 348.6</p>	<p>UNICOM 122.95</p>

RNAV 1-GPS or RADAR REQUIRED



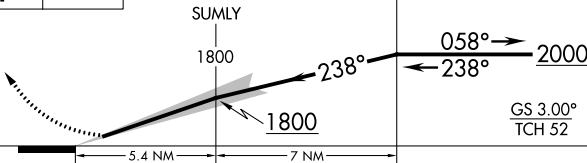
SE-2, 11 JUL 2024 to 08 AUG 2024

SE-2, 11 JUL 2024 to 08 AUG 2024

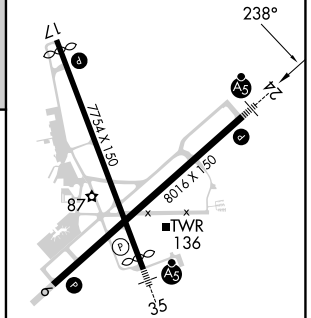


VGSI and ILS glidepath not coincident
(VGSI Angle 3.00/TCH 48).

TOPSY 4 NM Holding Pattern



ELEV 32	D	ELEV 26
---------	---	---------



CATEGORY	A	B	C	D
S-ILS 24**	226/24 200 (200-1/2)			

HIRL Rwy 6-24 and 17-35
REL Rwy 6 and 17