

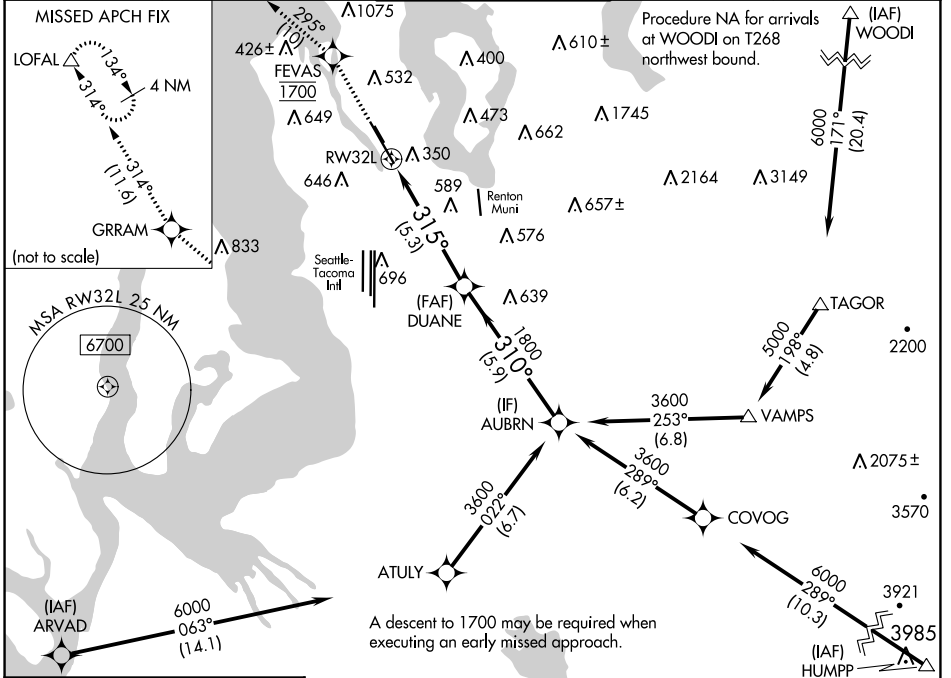
APP CRS 315°	Rwy Idg TDZE 22	9120
	Apt Elev 22	

RNAV (RNP) Z RWY 32L

BOEING FLD/KING COUNTY INTL (BFI)

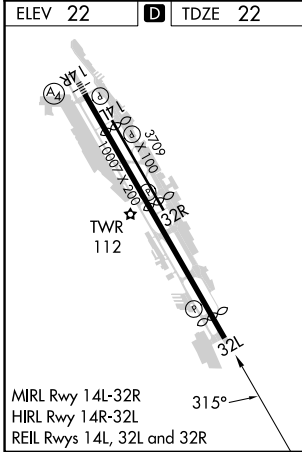
RNP AR APCH - GPS.	MISSED APPROACH: Climb direct FEVAS, cross FEVAS at 1700, then climb to 3000 on the RNAV missed approach route to LOFAL and hold.
RADAR required for missed approach.	
<p>▼ For uncompensated Baro-VNAV systems, procedure NA below -6°C or above 54°C.</p> <p>▲</p>	

ATIS 127.75	SEATTLE APP CON 125.9 306.9	BOEING TOWER 120.6 257.8	GND CON 121.9	CLNC DEL 132.4
-----------------------	---------------------------------------	------------------------------------	-------------------------	--------------------------



NW-1, 11 JUL 2024 to 08 AUG 2024

NW-1, 11 JUL 2024 to 08 AUG 2024



↑ FEVAS 1700	↑ 3000 tr 295°	☆ GRRAM tr 314°	△ LOFAL	AUBRN
VGSI and RNAV glidepath not coincident (VGSI Angle 3.10/TCH 66).				
CATEGORY	A	B	C	D
RNP 0.10 DA		567-1 $\frac{1}{8}$	545 (600-1 $\frac{1}{8}$)	
RNP 0.15 DA		681-1 $\frac{1}{8}$	659 (700-1 $\frac{1}{8}$)	
RNP 0.30 DA		836-2 $\frac{1}{2}$	814 (900-2 $\frac{1}{2}$)	
AUTHORIZATION REQUIRED				