

(CBAIN1.CBAIN) 23054

AL-384 (FAA)

BOEING FLD/KING COUNTY INTL (BFI)
SEATTLE, WASHINGTON

CBAIN ONE DEPARTURE (RNAV)

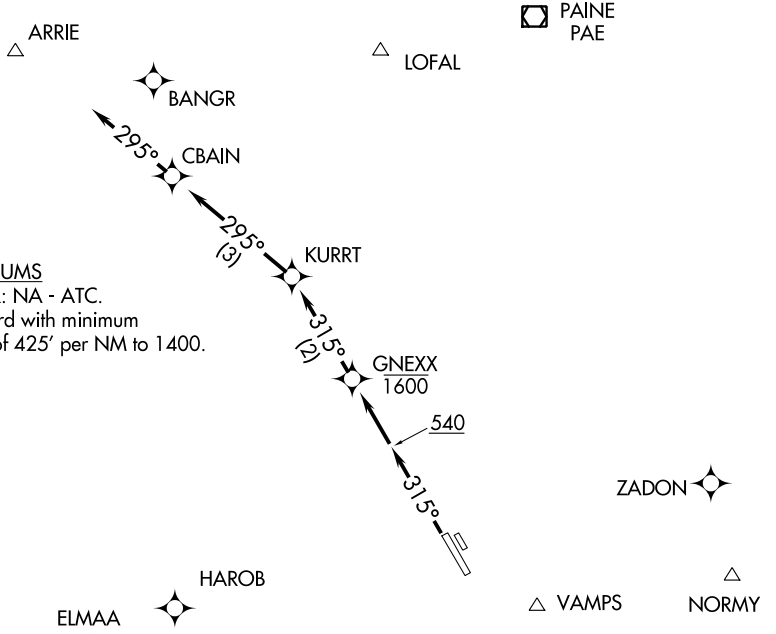
ATIS
127.75
CLNC DEL
132.4
GND CON
121.9
BOEING TOWER
120.6 257.8
SEATTLE DEP CON
120.4 269.125

**TOP ALTITUDE:
2100**

ALPSE

TAKEOFF MINIMUMS

Rwys 14L/R, 32R: NA - ATC.
Rwy 32L: Standard with minimum
climb of 425' per NM to 1400.



- NOTE: RNAV 1.
- NOTE: RADAR required.
- NOTE: DME/DME/IRU or GPS required.
- NOTE: ALDER departures expect direct/vectors to ALDER/V495/J1-189
- NOTE: ALPSE departures expect direct/vectors to ALPSE
- NOTE: ARRIE departures expect direct/vectors to ARRIE/J523
- NOTE: BANGR departures expect direct/vectors to BANGR
- NOTE: BUWZO departures expect direct/vectors to BUWZO
- NOTE: ELMAA departures expect direct/vectors to ELMAA/J70
- NOTE: HAROB departures expect direct/vectors to HAROB/Q5
- NOTE: LOFAL departures expect direct/vectors to LOFAL/V4-495
- NOTE: NORMY departures expect direct/vectors to NORMY/V120/J12-70-90
- NOTE: OLM departures expect direct/vectors to OLM
- NOTE: PAE departures expect direct/vectors to PAE
- NOTE: SUMMA departures expect direct/vectors to SUMMA/J5/J54/Q9
- NOTE: VAMPS departures expect direct/vectors to VAMPS/V2-298
- NOTE: ZADON departures expect direct/vectors to ZADON

NOTE: Chart not to scale.

DEPARTURE ROUTE DESCRIPTION

TAKEOFF RUNWAY 32L: Climb heading 315° to 540, then direct to cross GNEXX at or below 1600, then on track 315° to KURRT, then on track 295° to CBAIN, then on track 295° for vectors to assigned route/fix, maintain 2100 or as assigned by ATC.
Expect clearance to filed altitude/flight level within three minutes after departure.

CBAIN ONE DEPARTURE (RNAV)

(CBAIN1.CBAIN) 12OCT17

SEATTLE, WASHINGTON
BOEING FLD/KING COUNTY INTL (BFI)

NW-1, 11 JUL 2024 to 08 AUG 2024

NW-1, 11 JUL 2024 to 08 AUG 2024