

WAAS CH 90114 W10A	APP CRS 097°	Rwy Idg TDZE 30 Apt Elev 50	9351
--	------------------------	---	-------------

RNAV (GPS) RWY 10

SAVANNAH/HILTON HEAD INTL (SAV)

RNP APCH-GPS

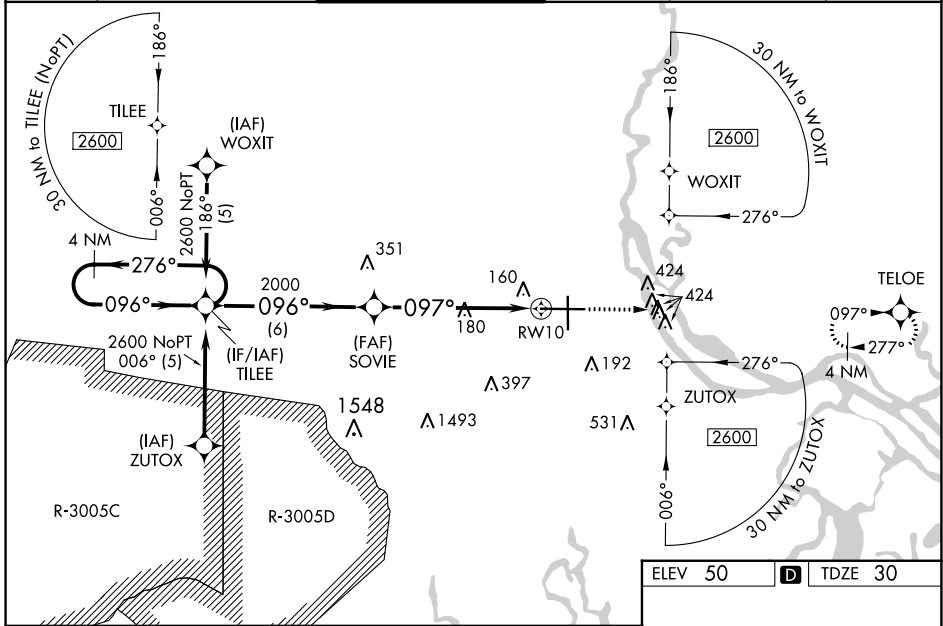
▼ For inop ALS increase LNAV/VNAV all Cats visibility to 1½ SM, increase LNAV Cat C/D to RVR 6000. For uncompensated Baro-VNAV systems, LNAV/VNAV NA below -15°C or above 54°C. When local altimeter setting not received, use Hilton Head Island altimeter setting and increase LPV DA to 296 feet and all visibilities to RVR 2000, increase LNAV/VNAV DA to 596 feet and all visibilities to 1¼ SM, increase all MDAs 80 feet and LNAV Cat C/D visibility to RVR 5000. For inop ALS when using Hilton Head Island altimeter setting, LNAV/VNAV all Cats visibility to 1½ SM, increase LNAV Cat C/D visibility to 1½ SM. VDP and Baro-VNAV NA when using Hilton Head Island altimeter setting.

MALSR



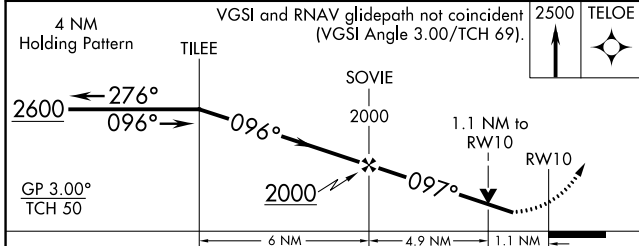
MISSED APPROACH:
Climb to 2500 direct
TELOE and hold.

ATIS 123.75	SAVANNAH APP CON* 125.3 371.875	SAVANNAH TOWER* 125.975 (CTAF) 257.8	GND CON 121.9 348.6	CLNC DEL 119.55 291.775	UNICOM 122.95
-----------------------	---	--	-------------------------------	-----------------------------------	-------------------------

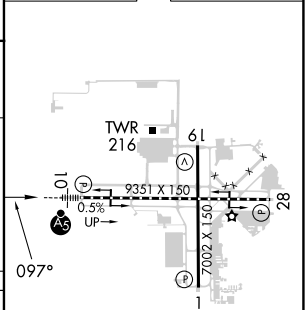


SE-4, 11 JUL 2024 to 08 AUG 2024

SE-4, 11 JUL 2024 to 08 AUG 2024



ELEV 50	D	TDZE 30
---------	----------	---------



CATEGORY	A	B	C	D
LPV DA	230/18		200 (200-½)	
LNAV/VNAV DA	530/50		500 (500-1)	
LNAV MDA	440/24	410 (400-½)	440/40	410 (400-¾)
C CIRCLING	520-1	470 (500-1)	740-2 690 (700-2)	740-2¼ 690 (700-2¼)