

SAVANNAH, GEORGIA

# HI-ILS or LOC RWY 10

LOC I-SAV <b>111.35</b> Chan <b>50 (Y)</b>	APCH CRS <b>097°</b>	Rwy ldg TDZE Arpt Elev	<b>9351</b> <b>30</b> <b>50</b>
--	-------------------------	------------------------------	---------------------------------------

AL-380 [USAF]

SAVANNAH/HILTON HEAD INTL (KSAV)

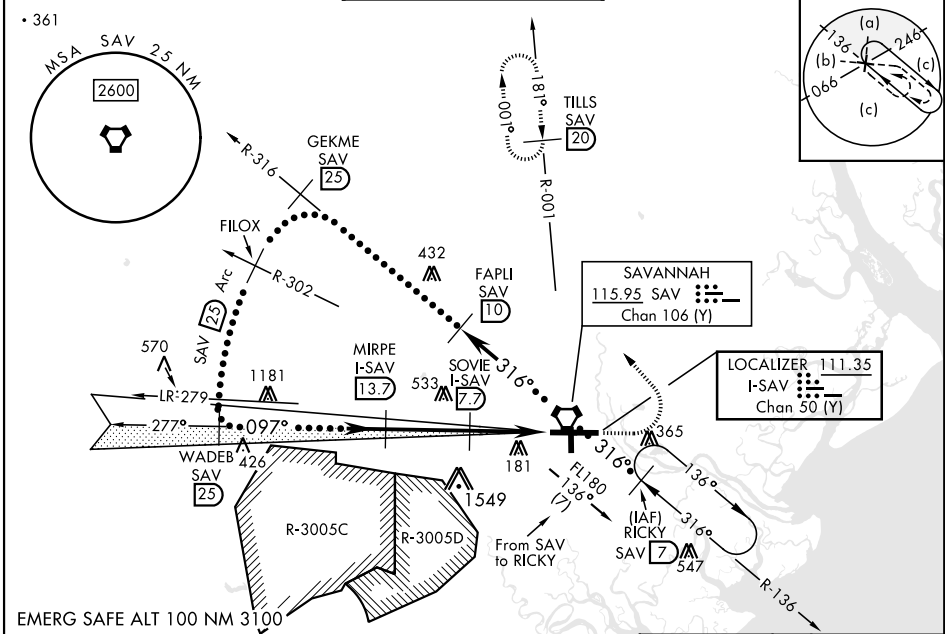
DME required

Procedure NA when Control Tower closed.  
 \* When ALS inop, increase vis to RVR 40  
 \*\* When ALS inop, increase vis to 1 1/2 miles.

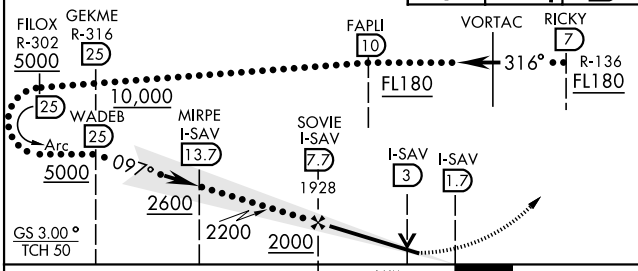
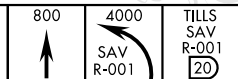


MISSED APPROACH: Climb to 800, then climbing left turn to 4000 via heading 330° and SAV VORTAC R-001 to TILLS/SAV 20 DME and hold.

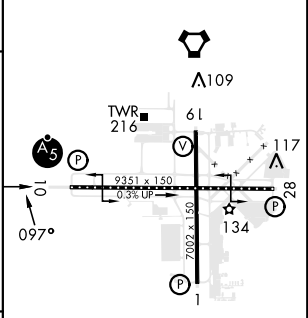
ATIS ★ <b>123.75</b>	APP CON <b>125.3 353.775</b>	TOWER ★ <b>125.975 (CTAF) 257.8</b>	GND CON <b>121.9 348.6</b>	CLNC DEL <b>119.55 291.775</b>
-------------------------	---------------------------------	--	-------------------------------	-----------------------------------



Use I-SAV DME when on the localizer course.  
 VGSI and ILS glidepath not coincident.  
 VGSI angle 3.00/TCH 69.



ELEV 50	TDZE 30
---------	---------



CATEGORY	C	D	E
S-ILS 10 *	230/18	200	(200-1/2)
S-LOC 10 **	500/50	470	(500-1)
CIRCLING	740-2 690 (700-2)	740-2 1/4 690 (700-2 1/4)	900-3 850 (900-3)

REIL Rwy 19, 28  
 HIRL all Rwy  
 TDZL/CL Rwy 10

SAVANNAH, GEORGIA  
 Amdt 8 08NOV18

32° 08' N-81° 12' W

SAVANNAH/HILTON HEAD INTL (KSAV)

# HI-ILS or LOC RWY 10

SE-4, 11 JUL 2024 to 08 AUG 2024

SE-4, 11 JUL 2024 to 08 AUG 2024